

BOOST ULTRA WARM FIXED SURFACE MOUNTED

INDOOR / LINEAR

ambience

MAKING LIGHT WORK



PHYSICAL

Installation Method Fixed Surface Mounted

Accessories Rear tails 3m both ends

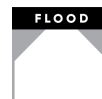
IP Rating IP20

ELECTRICAL

Wattage 10W/m, 14.5W/m

Voltage 24V

Dimming Control All types (order separately)



RoHS



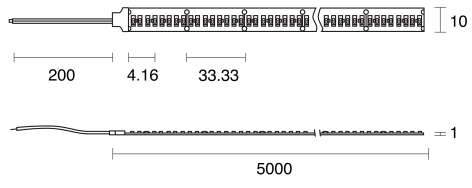
IP20

O P T I C A L

Distribution	Flood 120°
CCT	1600K, 2000K, 2200K
CRI	CRI90
System Lumen	812lm - 1350lm
System Efficacy	Up to 100lm/W
Lifetime (L70B50)	50,000hrs

A D D I T I O N A L

LED Module	SMD2835 240LEDs/m
LED Driver	Remote
Warranty	5 Years



Boost Ultra Warm