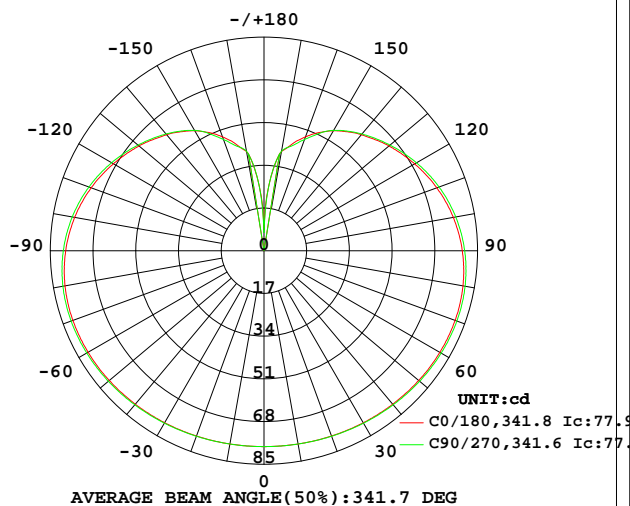


LUMINAIRE PHOTOMETRIC TEST REPORT

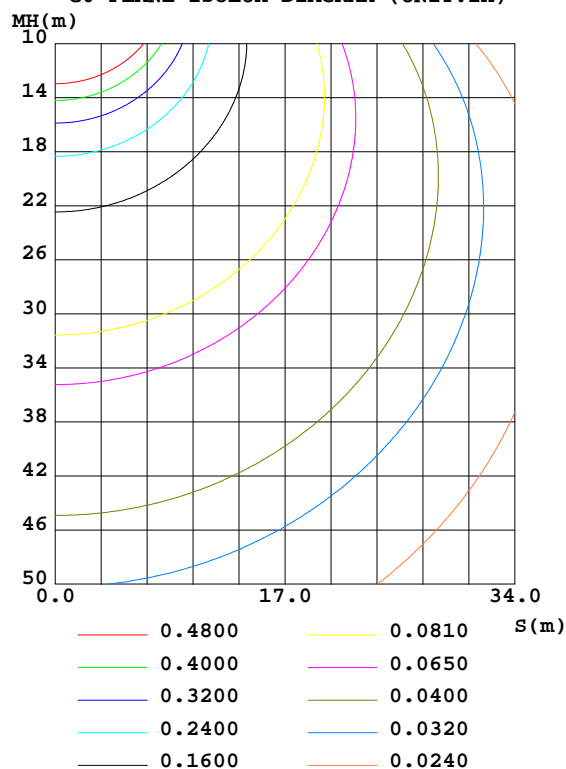
Test:U:240.1V I:0.0441A P:9.278W PF:0.8755 Freq:50.00Hz Lamp Flux:926.246x1 lm		
NAME: Bally Full Sphere	TYPE:	WEIGHT:
SPEC.:	DIM.:	SERIAL No.:
MFR.: Ambience Lighting	SUR.:	Shielding Angle:

DATA OF LAMP		PHOTOMETRIC DATA				Eff: 99.83 lm/W
MODEL	300mm	I _{max} (cd)	81.72	S/MH(C0/180)	1.56	
NOMINAL POWER(W)	7	LOR(%)	100.0	S/MH(C90/270)	1.57	
RATED VOLTAGE(V)	240	TOTAL FLUX(lm)	926.25	η UP,DN(C0-180)	22.8,27.2	
NOMINAL FLUX(lm)	926.246	CIE CLASS	DIFFUSE	η UP,DN(C180-360)	22.8,27.2	
LAMPS INSIDE	1	η up(%)	45.5	CIBSE SHR NOM	1.75	
TEST VOLTAGE(V)	240	η down(%)	54.5	CIBSE SHR MAX	1.75	

LUMINOUS INTENSITY DISTRIBUTION DIAGRAM



C0 PLANE ISOLUX DIAGRAM (UNIT:lx)



C Range: 0 - 360DEG
C Interval: 22.5DEG
Test Speed: HIGH
Temperature:25.1DEG
Operators:Wilson
Test Date:2021-03-13

γ Range: 0 - 180DEG
γ Interval: 0.5DEG
Test System:EVERFINE GO-R5000_V2 SYSTEM V2.0.354
Humidity:60.5%
Test Distance:2.521m [K=1.0000]
Remarks: File No.: WT-F-504-3206-01-A

Checker: Near Gao

Assessor: Akin Xu

ZONAL FLUX DIAGRAM

ZONAL FLUX DIAGRAM:

γ	C0	C45	C90	C135	C180	C225	C270	C315	γ	Φ zone	Φ total	%lum, lamp
5	77.98	77.95	77.98	77.95	77.98	77.95	77.98	77.95	0- 5	1.863	1.863	0.20,0.20
10	78.12	78.05	78.10	78.05	78.12	78.05	78.10	78.05	5- 10	5.581	7.445	0.80,0.80
15	78.29	78.25	78.29	78.25	78.29	78.25	78.29	78.25	10- 15	9.273	16.72	1.8,1.8
20	78.52	78.50	78.57	78.50	78.52	78.50	78.57	78.50	15- 20	12.92	29.64	3.2,3.2
25	78.71	78.79	78.88	78.79	78.71	78.79	78.88	78.79	20- 25	16.50	46.13	4.98,4.98
30	79.07	79.12	79.24	79.12	79.07	79.12	79.24	79.12	25- 30	19.98	66.11	7.14,7.14
35	79.36	79.50	79.62	79.50	79.36	79.50	79.62	79.50	30- 35	23.36	89.47	9.66,9.66
40	79.70	79.86	80.03	79.86	79.70	79.86	80.03	79.86	35- 40	26.58	116.1	12.5,12.5
45	80.01	80.23	80.42	80.23	80.01	80.23	80.42	80.23	40- 45	29.64	145.7	15.7,15.7
50	80.40	80.60	80.81	80.60	80.40	80.60	80.81	80.60	45- 50	32.49	178.2	19.2,19.2
55	80.62	80.89	81.17	80.89	80.62	80.89	81.17	80.89	50- 55	35.11	213.3	23,23
60	80.83	81.11	81.43	81.11	80.83	81.11	81.43	81.11	55- 60	37.45	250.7	27.1,27.1
65	80.90	81.29	81.61	81.29	80.90	81.29	81.61	81.29	60- 65	39.48	290.2	31.3,31.3
70	80.93	81.31	81.69	81.31	80.93	81.31	81.69	81.31	65- 70	41.17	331.4	35.8,35.8
75	80.76	81.19	81.60	81.19	80.76	81.19	81.60	81.19	70- 75	42.48	373.9	40.4,40.4
80	80.40	80.82	81.25	80.82	80.40	80.82	81.25	80.82	75- 80	43.36	417.2	45,45
85	79.74	80.24	80.65	80.24	79.74	80.24	80.65	80.24	80- 85	43.77	461.0	49.8,49.8
90	78.92	79.41	79.86	79.41	78.92	79.41	79.86	79.41	85- 90	43.71	504.7	54.5,54.5
95	77.80	78.31	78.82	78.31	77.80	78.31	78.82	78.31	90- 95	43.18	547.9	59.2,59.2
100	76.49	76.98	77.48	76.98	76.49	76.98	77.48	76.98	95-100	42.20	590.1	63.7,63.7
105	74.94	75.45	75.91	75.45	74.94	75.45	75.91	75.45	100-105	40.79	630.9	68.1,68.1
110	73.20	73.68	74.15	73.68	73.20	73.68	74.15	73.68	105-110	38.98	669.9	72.3,72.3
115	71.26	71.75	72.18	71.75	71.26	71.75	72.18	71.75	110-115	36.83	706.7	76.3,76.3
120	69.23	69.61	70.04	69.61	69.23	69.61	70.04	69.61	115-120	34.37	741.1	80,80
125	67.07	67.39	67.80	67.39	67.07	67.39	67.80	67.39	120-125	31.68	772.7	83.4,83.4
130	64.91	65.10	65.47	65.10	64.91	65.10	65.47	65.10	125-130	28.82	801.6	86.5,86.5
135	62.57	62.83	63.12	62.83	62.57	62.83	63.12	62.83	130-135	25.85	827.4	89.3,89.3
140	60.31	60.47	60.68	60.47	60.31	60.47	60.68	60.47	135-140	22.82	850.2	91.8,91.8
145	57.83	57.80	58.13	57.80	57.83	57.80	58.13	57.80	140-145	19.75	870.0	93.9,93.9
150	55.20	54.91	55.30	54.91	55.20	54.91	55.30	54.91	145-150	16.64	886.6	95.7,95.7
155	51.92	51.52	51.45	51.52	51.92	51.52	51.45	51.52	150-155	13.51	900.1	97.2,97.2
160	48.19	47.93	47.13	47.93	48.19	47.93	47.13	47.93	155-160	10.44	910.6	98.3,98.3
165	44.13	44.34	43.29	44.34	44.13	44.34	43.29	44.34	160-165	7.589	918.2	99.1,99.1
170	40.06	40.09	40.18	40.09	40.06	40.09	40.18	40.09	165-170	5.014	923.2	99.7,99.7
175	28.18	28.10	28.23	28.10	28.18	28.10	28.23	28.10	170-175	2.538	925.7	99.9,99.9
180	8.519	7.536	7.269	7.536	8.519	7.536	7.269	7.536	175-180	0.5274	926.2	100,100
DEG	LUMINOUS INTENSITY:cd									UNIT:lm		

Conical surface Flux(90deg): 145.69 lm

%lum = 15.7%

%lamp = 15.7%

Conical surface Flux(120deg): 250.73 lm

%lum = 27.1%

%lamp = 27.1%

C Range: 0 - 360DEG
 C Interval: 22.5DEG
 Test Speed: HIGH
 Temperature:25.1DEG
 Operators:Wilson
 Test Date:2021-03-13

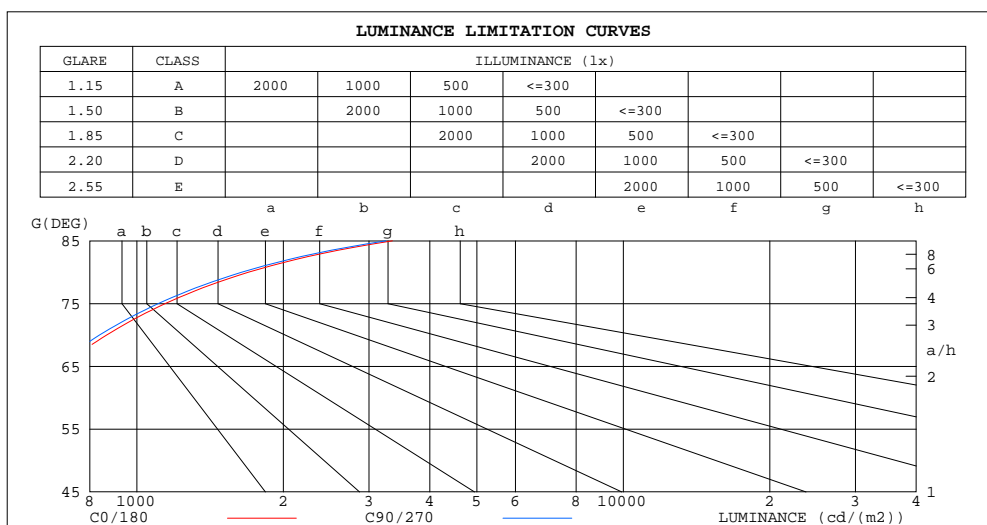
γ Range: 0 - 180DEG
 γ Interval: 0.5DEG
 Test System:EVERFINE GO-R5000_V2 SYSTEM V2.0.354
 Humidity:60.5%
 Test Distance:2.521m [K=1.0000]
 Remarks: File No.: WT-F-504-3206-01-A

Checker: Near Gao

Assessor: Akin Xu

LUMINANCE LIMITATION CURVES

Test:U:240.1V I:0.0441A P:9.278W PF:0.8755 Freq:50.00Hz Lamp Flux:926.246x1 lm		
NAME: Bally Full Sphere	TYPE:	WEIGHT:
SPEC.:	DIM.:	SERIAL No.:
MFR.: Ambience Lighting	SUR.:	Shielding Angle:



LUMINANCE cd/(m2)		
G(DEG)	C0/180	C90/270
85	3352	3248
80	1696	1642
75	1143	1107
70	867	838
65	701	678
60	592	572
55	515	497
50	458	441
45	415	399

C Range: 0 - 360DEG
C Interval: 22.5DEG
Test Speed: HIGH
Temperature:25.1DEG
Operators:Wilson
Test Date:2021-03-13

γ Range: 0 - 180DEG
γ Interval: 0.5DEG
Test System:EVERFINE GO-R5000_V2 SYSTEM V2.0.354
Humidity:60.5%
Test Distance:2.521m [K=1.0000]
Remarks: File No.: WT-F-504-3206-01-A

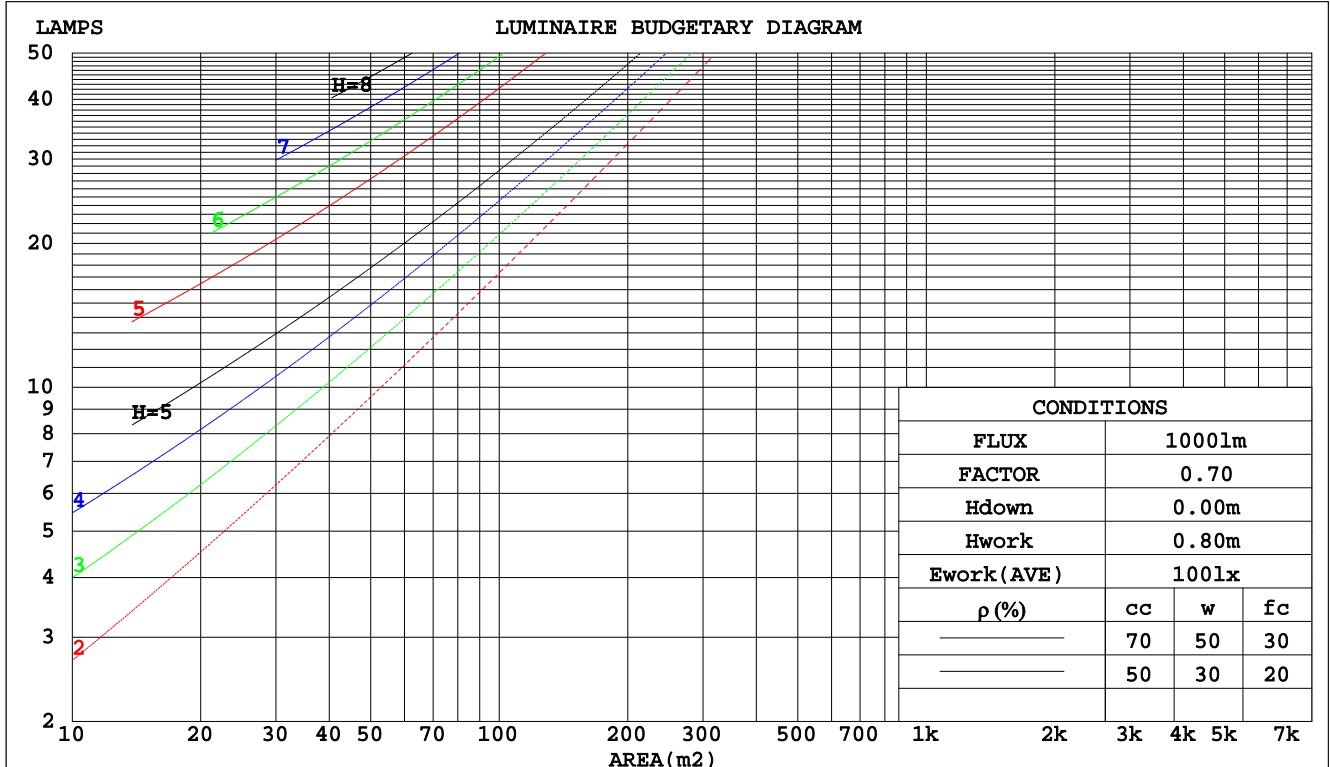
Checker: Near Gao

Assessor: Akin Xu

CU AND LUMINAIRE BUDGETARY ESTIMATE DIAGRAM

Test:U:240.1V I:0.0441A P:9.278W PF:0.8755 Freq:50.00Hz Lamp Flux:926.246x1 lm		
NAME: Bally Full Sphere	TYPE:	WEIGHT:
SPEC.:	DIM.:	SERIAL No.:
MFR.: Ambience Lighting	SUR.:	Shielding Angle:

pcc	80%			70%			50%			30%			10%			0
pw	50%	30%	10%	50%	30%	10%	50%	30%	10%	50%	30%	10%	50%	30%	10%	0
pfc	20%			20%			20%			20%			20%			0
RCR	RCR:Room Cavity Ratio			Coefficients of Utilization(CU)												
0.0	1.08	1.08	1.08	1.00	1.00	1.00	.86	.86	.86	.72	.72	.72	.60	.60	.60	.54
1.0	.88	.82	.77	.81	.76	.71	.68	.64	.61	.57	.54	.51	.46	.44	.42	.36
2.0	.74	.66	.59	.68	.61	.55	.57	.52	.47	.47	.43	.39	.38	.35	.32	.27
3.0	.64	.55	.48	.59	.51	.44	.49	.43	.38	.40	.36	.31	.32	.29	.25	.21
4.0	.56	.46	.39	.51	.43	.36	.43	.36	.31	.35	.30	.26	.28	.24	.21	.17
5.0	.49	.40	.33	.45	.37	.31	.38	.31	.26	.31	.26	.22	.25	.21	.17	.14
6.0	.44	.35	.28	.40	.32	.26	.34	.27	.22	.28	.23	.18	.22	.18	.15	.12
7.0	.39	.30	.24	.36	.28	.22	.31	.24	.19	.25	.20	.16	.20	.16	.13	.10
8.0	.35	.27	.21	.33	.25	.20	.28	.21	.17	.23	.18	.14	.19	.14	.11	.09
9.0	.32	.24	.18	.30	.22	.17	.25	.19	.15	.21	.16	.12	.17	.13	.10	.08
10.0	.29	.22	.16	.27	.20	.15	.23	.17	.13	.19	.15	.11	.16	.12	.09	.07



C Range: 0 - 360DEG
C Interval: 22.5DEG
Test Speed: HIGH
Temperature:25.1DEG
Operators:Wilson
Test Date:2021-03-13

γ Range: 0 - 180DEG
γ Interval: 0.5DEG
Test System:EVERFINE GO-R5000_V2 SYSTEM V2.0.354
Humidity:60.5%
Test Distance:2.52lm [K=1.0000]
Remarks: File No.: WT-F-504-3206-01-A

Checker: Near Gao

Assessor: Akin Xu

WEC AND CCEC

Test:U:240.1V I:0.0441A P:9.278W PF:0.8755 Freq:50.00Hz Lamp Flux:926.246x1 lm		
NAME: Bally Full Sphere	TYPE:	WEIGHT:
SPEC.:	DIM.:	SERIAL No.:
MFR.: Ambience Lighting	SUR.:	Shielding Angle:

pcc	80%			70%			50%			30%			10%			0	
pw	50%	30%	10%	50%	30%	10%	50%	30%	10%	50%	30%	10%	50%	30%	10%	0	
pfc	20%			20%			20%			20%			20%			0	
RCR	RCR:Room Cavity Ratio						Wall Exitance Coefficients(WEC)										
0.0																	
1.0	.408	.232	.073	.387	.221	.070	.347	.199	.064	.311	.179	.058	.278	.161	.052		
2.0	.341	.187	.057	.322	.177	.055	.286	.159	.049	.253	.142	.044	.222	.126	.040		
3.0	.298	.159	.048	.281	.150	.045	.248	.134	.041	.217	.119	.036	.189	.105	.032		
4.0	.266	.138	.041	.250	.131	.039	.219	.116	.035	.191	.103	.031	.165	.090	.027		
5.0	.240	.122	.035	.225	.116	.034	.197	.103	.030	.172	.090	.027	.147	.079	.024		
6.0	.219	.110	.031	.205	.104	.030	.180	.092	.027	.156	.081	.024	.133	.070	.021		
7.0	.201	.099	.028	.188	.094	.027	.165	.083	.024	.143	.073	.021	.122	.063	.019		
8.0	.186	.091	.026	.174	.086	.024	.152	.076	.022	.132	.067	.019	.112	.058	.017		
9.0	.173	.084	.023	.162	.079	.022	.142	.070	.020	.122	.061	.018	.104	.053	.015		
10.0	.161	.077	.021	.151	.073	.020	.132	.065	.018	.114	.057	.016	.097	.049	.014		

pcc	80%			70%			50%			30%			10%			0	
pw	50%	30%	10%	50%	30%	10%	50%	30%	10%	50%	30%	10%	50%	30%	10%	0	
pfc	20%			20%			20%			20%			20%			0	
RCR	RCR:Room Cavity Ratio						Ceiling Cavity Exitance Coefficients(CCEC)										
0.0	.537	.537	.537	.459	.459	.459	.313	.313	.313	.180	.180	.180	.058	.058	.058		
1.0	.537	.505	.476	.459	.433	.410	.314	.298	.283	.181	.173	.165	.058	.056	.053		
2.0	.531	.484	.444	.455	.416	.384	.312	.288	.268	.180	.168	.157	.058	.054	.051		
3.0	.524	.468	.424	.449	.404	.368	.308	.281	.258	.178	.164	.152	.057	.053	.050		
4.0	.516	.457	.411	.443	.395	.357	.305	.275	.252	.176	.161	.149	.057	.052	.049		
5.0	.509	.448	.402	.437	.387	.350	.301	.271	.247	.174	.159	.147	.056	.052	.048		
6.0	.502	.440	.396	.431	.381	.345	.297	.267	.244	.173	.157	.145	.056	.051	.048		
7.0	.495	.434	.392	.426	.376	.341	.294	.264	.242	.171	.155	.144	.055	.051	.048		
8.0	.488	.429	.388	.420	.372	.338	.291	.261	.240	.169	.154	.143	.055	.051	.047		
9.0	.482	.424	.385	.415	.368	.336	.288	.259	.239	.168	.153	.142	.054	.050	.047		
10.0	.477	.420	.383	.411	.365	.334	.285	.257	.238	.166	.152	.142	.054	.050	.047		

C Range: 0 - 360DEG
C Interval: 22.5DEG
Test Speed: HIGH
Temperature:25.1DEG
Operators:Wilson
Test Date:2021-03-13

γ Range: 0 - 180DEG
γ Interval: 0.5DEG
Test System:EVERFINE GO-R5000_V2 SYSTEM V2.0.354
Humidity:60.5%
Test Distance:2.521m [K=1.0000]
Remarks: File No.: WT-F-504-3206-01-A

Checker: Near Gao

Assessor: Akin Xu

UGR(Unified Glare Rating) Table

Test:U:240.1V I:0.0441A P:9.278W PF:0.8755 Freq:50.00Hz Lamp Flux:926.246x1 lm											
NAME: Bally Full Sphere					TYPE:			WEIGHT:			
SPEC.:					DIM.:			SERIAL No.:			
MFR.: Ambience Lighting					SUR.:			Shielding Angle:			
ceiling/cavity	0.7	0.7	0.5	0.5	0.3	0.7	0.7	0.5	0.5	0.3	
walls	0.5	0.3	0.5	0.3	0.3	0.5	0.3	0.5	0.3	0.3	
working plane	0.2	0.2	0.2	0.2	0.2	0.2	0.2	0.2	0.2	0.2	
Room dimensions		Viewed crosswise					Viewed endwise				
x = 2H y = 2H	7.9	9.0	8.7	9.8	10.9	7.8	8.9	8.6	9.8	10.8	
	3H	11.1	12.1	11.9	13.0	14.1	11.0	12.0	11.8	12.9	14.0
	4H	12.9	13.9	13.8	14.8	15.9	12.8	13.8	13.7	14.6	15.8
	6H	14.9	15.8	15.8	16.7	17.9	14.8	15.7	15.7	16.6	17.8
	8H	16.1	16.9	17.0	17.9	19.0	15.9	16.8	16.8	17.7	18.9
	12H	17.4	18.2	18.3	19.1	20.3	17.2	18.0	18.1	19.0	20.1
4H	2H	8.8	9.8	9.7	10.7	11.8	8.8	9.7	9.6	10.6	11.8
	3H	12.2	13.0	13.0	13.9	15.1	12.1	12.9	13.0	13.9	15.0
	4H	14.1	14.9	15.0	15.8	17.0	14.0	14.8	14.9	15.7	16.9
	6H	16.3	17.0	17.2	17.9	19.1	16.2	16.9	17.1	17.8	19.0
	8H	17.5	18.1	18.4	19.1	20.3	17.4	18.0	18.3	19.0	20.2
	12H	18.9	19.5	19.9	20.5	21.7	18.8	19.4	19.7	20.3	21.6
8H	4H	14.8	15.4	15.7	16.4	17.6	14.7	15.4	15.7	16.3	17.6
	6H	17.2	17.8	18.2	18.7	20.0	17.2	17.7	18.1	18.7	20.0
	8H	18.6	19.1	19.6	20.1	21.4	18.6	19.1	19.5	20.0	21.3
	12H	20.2	20.7	21.2	21.7	23.0	20.2	20.6	21.1	21.6	22.9
12H	4H	15.0	15.6	15.9	16.5	17.8	14.9	15.5	15.9	16.5	17.7
	6H	17.5	18.0	18.5	19.0	20.3	17.5	18.0	18.5	19.0	20.2
	8H	19.0	19.5	20.0	20.5	21.8	19.0	19.4	20.0	20.4	21.7
Variations with the observer position at spacings:											
S = 1.0H	+ 0.1 / - 0.1					+ 0.1 / - 0.1					
1.5H	+ 0.2 / - 0.3					+ 0.2 / - 0.3					
2.0H	+ 0.3 / - 0.4					+ 0.3 / - 0.4					

CIE Pub.117, 926.2 lm Total Lamp Luminous Flux Correct ($8\log(F/F_0) = -0.3$)

C Range: 0 - 360DEG
C Interval: 22.5DEG
Test Speed: HIGH
Temperature:25.1DEG
Operators:Wilson
Test Date:2021-03-13

γ Range: 0 - 180DEG
 γ Interval: 0.5DEG
Test System:EVERFINE GO-R5000_V2 SYSTEM V2.0.354
Humidity:60.5%
Test Distance:2.521m [K=1.0000]
Remarks: File No.: WT-F-504-3206-01-A

Checker: Near Gao

Assessor: Akin Xu

UTILIZATION FACTORS TABLE

Test:U:240.1V I:0.0441A P:9.278W PF:0.8755 Freq:50.00Hz Lamp Flux:926.246x1 lm		
NAME: Bally Full Sphere	TYPE:	WEIGHT:
SPEC.:	DIM.:	SERIAL No.:
MFR.: Ambience Lighting	SUR.:	Shielding Angle:

REFLECTANCE										
Ceiling	0.8	0.8	0.8	0.7	0.7	0.7	0.5	0.5	0.5	0
Walls	0.7	0.5	0.3	0.7	0.5	0.3	0.7	0.5	0.3	0
Working plane	0.2	0.2	0.2	0.2	0.2	0.2	0.2	0.2	0.2	0
ROOM INDEX	UTILIZATION FACTORS(PERCENT) $k(RI) \times RCR = 5$									
$k = 0.60$	38	25	18	36	24	17	32	22	16	9
0.80	46	33	24	44	31	23	39	28	21	12
1.00	53	39	30	50	37	29	44	36	27	15
1.25	60	46	37	56	44	35	49	39	32	19
1.50	66	52	42	61	49	40	53	43	36	21
2.00	73	60	51	68	57	48	59	50	43	26
2.50	78	66	57	73	62	54	62	54	48	28
3.00	82	71	63	76	67	59	65	58	52	31
4.00	87	78	70	81	73	66	69	63	57	35
5.00	91	83	76	84	77	71	72	66	61	37
ROOM INDEX	UF(total)									Direct
According to DIN EN 13032-2 2004			Suspended					SHRNOM = 1.25		

C Range: 0 - 360DEG
 C Interval: 22.5DEG
 Test Speed: HIGH
 Temperature:25.1DEG
 Operators:Wilson
 Test Date:2021-03-13

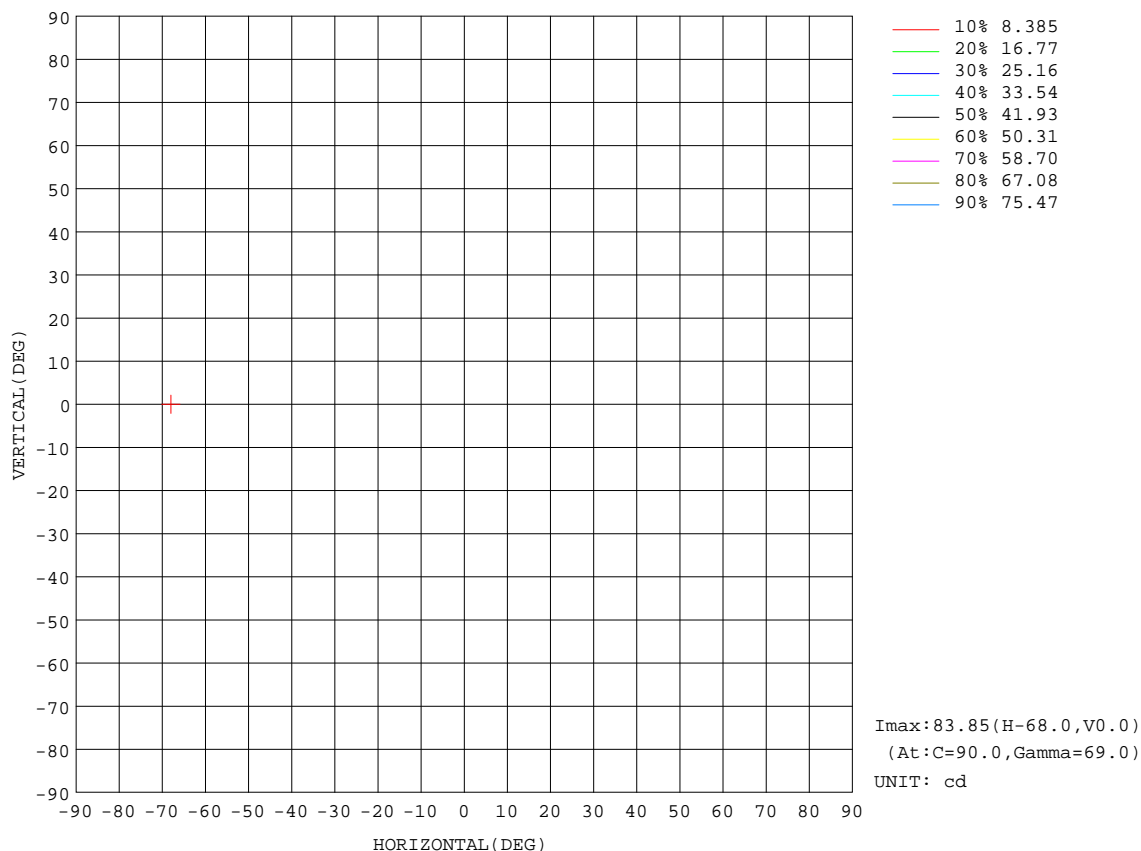
Checker: Near Gao

γ Range: 0 - 180DEG
 γ Interval: 0.5DEG
 Test System:EVERFINE GO-R5000_V2 SYSTEM V2.0.354
 Humidity:60.5%
 Test Distance:2.521m [K=1.0000]
 Remarks: File No.: WT-F-504-3206-01-A

Assessor: Akin Xu

ISOCANDELA DIAGRAM

Test:U:240.1V I:0.0441A P:9.278W PF:0.8755 Freq:50.00Hz Lamp Flux:926.246x1 lm		
NAME: Bally Full Sphere	TYPE:	WEIGHT:
SPEC.:	DIM.:	SERIAL No.:
MFR.: Ambience Lighting	SUR.:	Shielding Angle:



C Range: 0 - 360DEG
 C Interval: 22.5DEG
 Test Speed: HIGH
 Temperature:25.1DEG
 Operators:Wilson
 Test Date:2021-03-13

γ Range: 0 - 180DEG
 γ Interval: 0.5DEG
 Test System:EVERFINE GO-R5000_V2 SYSTEM V2.0.354
 Humidity:60.5%
 Test Distance:2.521m [K=1.0000]
 Remarks: File No.: WT-F-504-3206-01-A

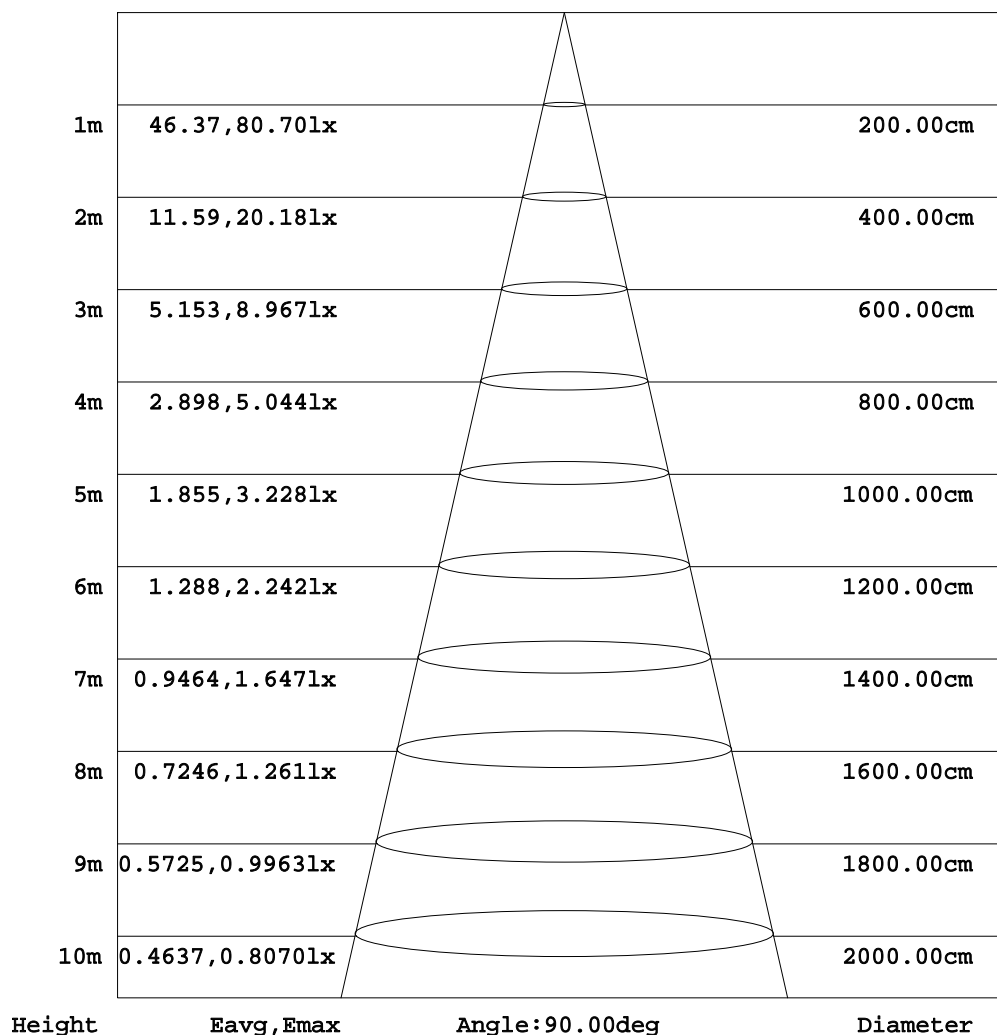
Checker: Near Gao

Assessor: Akin Xu

AAI Figure

Test:U:240.1V I:0.0441A P:9.278W PF:0.8755 Freq:50.00Hz Lamp Flux:926.246x1 lm		
NAME: Bally Full Sphere	TYPE:	WEIGHT:
SPEC.:	DIM.:	SERIAL No.:
MFR.: Ambience Lighting	SUR.:	Shielding Angle:

Flux out:145.7 lm



Note:The Curves indicate the illuminated area and the average illumination when the luminaire is at different distance.

C Range: 0 - 360DEG
C Interval: 22.5DEG
Test Speed: HIGH
Temperature:25.1DEG
Operators:Wilson
Test Date:2021-03-13

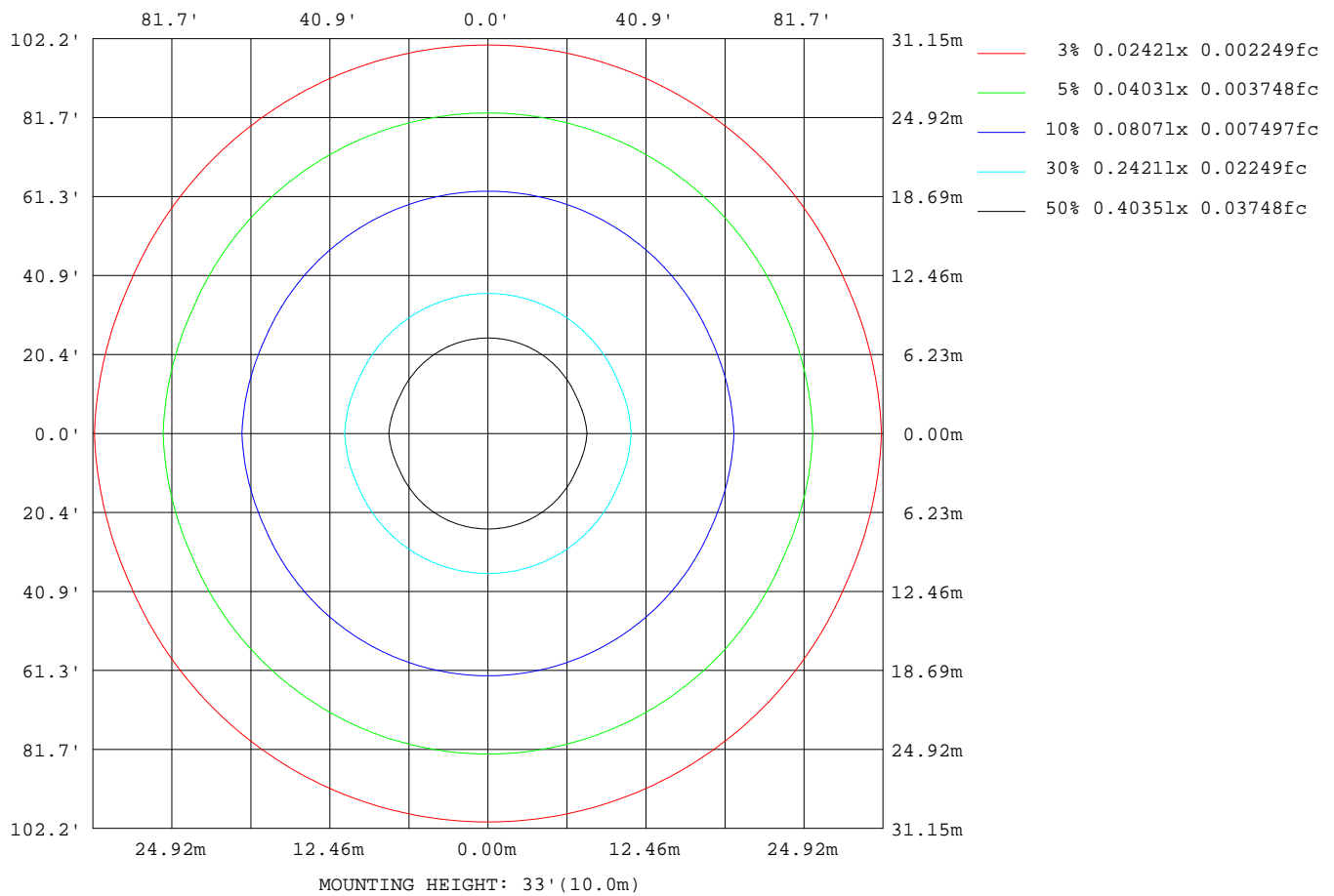
γ Range: 0 - 180DEG
γ Interval: 0.5DEG
Test System:EVERFINE GO-R5000_V2 SYSTEM V2.0.354
Humidity:60.5%
Test Distance:2.521m [K=1.0000]
Remarks: File No.: WT-F-504-3206-01-A

Checker: Near Gao

Assessor: Akin Xu

ISOLUX DIAGRAM

Test:U:240.1V I:0.0441A P:9.278W PF:0.8755 Freq:50.00Hz Lamp Flux:926.246x1 lm		
NAME: Bally Full Sphere	TYPE:	WEIGHT:
SPEC.:	DIM.:	SERIAL No.:
MFR.: Ambience Lighting	SUR.:	Shielding Angle:



C Range: 0 - 360DEG
C Interval: 22.5DEG
Test Speed: HIGH
Temperature:25.1DEG
Operators:Wilson
Test Date:2021-03-13

γ Range: 0 - 180DEG
 γ Interval: 0.5DEG
Test System:EVERFINE GO-R5000_V2 SYSTEM V2.0.354
Humidity:60.5%
Test Distance:2.521m [K=1.0000]
Remarks: File No.: WT-F-504-3206-01-A

Checker: Near Gao

Assessor: Akin Xu

LED Avg.L Report

Test:U:240.1V I:0.0441A P:9.278W PF:0.8755 Freq:50.00Hz Lamp Flux:926.246x1 lm		
NAME: Bally Full Sphere	TYPE:	WEIGHT:
SPEC.:	DIM.:	SERIAL No.:
MFR.: Ambience Lighting	SUR.:	Shielding Angle:

AvgL	cd/m2
L_0~180(65)av	677
L_0~180(75)av	1104
L_0~180(85)av	3238
L_90~270(65)av	683
L_90~270(75)av	1116
L_90~270(85)av	3275
L_45(65)av	681
L_45(75)av	1110
L_45(85)av	3258

Standard: GB/T 29293-2012

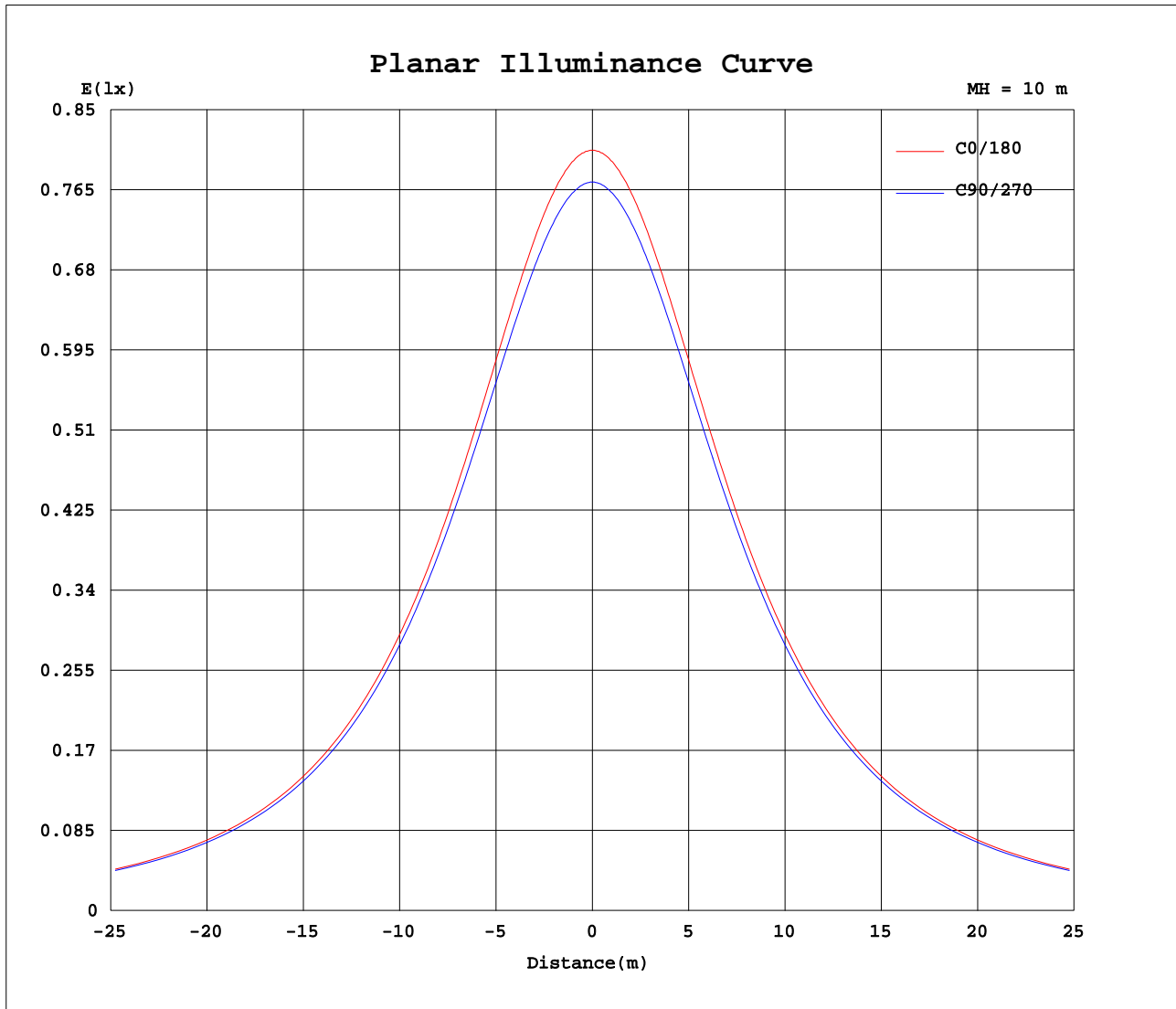
C Range: 0 - 360DEG
C Interval: 22.5DEG
Test Speed: HIGH
Temperature:25.1DEG
Operators:Wilson
Test Date:2021-03-13

Checker: Near Gao

γ Range: 0 - 180DEG
γ Interval: 0.5DEG
Test System:EVERFINE GO-R5000_V2 SYSTEM V2.0.354
Humidity:60.5%
Test Distance:2.521m [K=1.0000]
Remarks: File No.: WT-F-504-3206-01-A

Assessor: Akin Xu

Planar Illuminance Curve



C Range: 0 - 360DEG
C Interval: 22.5DEG
Test Speed: HIGH
Temperature: 25.1DEG
Operators: Wilson
Test Date: 2021-03-13

γ Range: 0 - 180DEG
 γ Interval: 0.5DEG
Test System: EVERFINE GO-R5000_V2 SYSTEM V2.0.354
Humidity: 60.5%
Test Distance: 2.521m [K=1.0000]
Remarks: File No.: WT-F-504-3206-01-A

Checker: Near Gao

Assessor: Akin Xu

LUMINOUS DISTRIBUTION INTENSITY DATA

Test:U:240.1V I:0.0441A P:9.278W PF:0.8755 Freq:50.00Hz Lamp Flux:926.246x1 lm																	
NAME: Bally Full Sphere									TYPE:						WEIGHT:		
SPEC.:									DIM.:						SERIAL No.:		
MFR.: Ambience Lighting									SUR.:						Shielding Angle:		

Table--1

UNIT: cd

C(DEG) γ (DEG)	0	22.5	45	67.5	90	112.5	135	157.5	180	202.5	225	247.5	270	292.5	315	337.5			
0	77.9	77.9	77.9	77.9	77.9	77.9	77.9	77.9	77.9	77.9	77.9	77.9	77.9	77.9	77.9	77.9			
5	78.0	77.9	77.9	78.0	78.0	78.0	77.9	77.9	78.0	77.9	77.9	78.0	78.0	78.0	77.9	77.9			
10	78.1	78.0	78.1	78.1	78.1	78.1	78.1	78.0	78.1	78.0	78.1	78.1	78.1	78.1	78.1	78.0			
15	78.3	78.2	78.3	78.3	78.3	78.3	78.3	78.2	78.3	78.2	78.3	78.3	78.3	78.3	78.3	78.2			
20	78.5	78.4	78.5	78.5	78.6	78.5	78.5	78.4	78.5	78.4	78.5	78.5	78.6	78.5	78.5	78.4			
25	78.7	78.7	78.8	78.8	78.9	78.8	78.8	78.7	78.7	78.7	78.8	78.8	78.9	78.8	78.8	78.7			
30	79.1	79.0	79.1	79.2	79.2	79.2	79.1	79.0	79.1	79.0	79.1	79.2	79.2	79.2	79.1	79.0			
35	79.4	79.3	79.5	79.6	79.6	79.6	79.5	79.3	79.4	79.3	79.5	79.6	79.6	79.6	79.5	79.3			
40	79.7	79.7	79.9	80.0	80.0	80.0	79.9	79.7	79.7	79.7	79.9	80.0	80.0	80.0	79.9	79.7			
45	80.0	80.0	80.2	80.4	80.4	80.4	80.2	80.0	80.0	80.0	80.2	80.4	80.4	80.4	80.2	80.0			
50	80.4	80.4	80.6	80.7	80.8	80.7	80.6	80.4	80.4	80.4	80.6	80.7	80.8	80.7	80.6	80.4			
55	80.6	80.6	80.9	81.1	81.2	81.1	80.9	80.6	80.6	80.6	80.9	81.1	81.2	81.1	80.9	80.6			
60	80.8	80.9	81.1	81.4	81.4	81.4	81.1	80.9	80.8	80.9	81.1	81.4	81.4	81.4	81.1	80.9			
65	80.9	81.0	81.3	81.5	81.6	81.5	81.3	81.0	80.9	81.0	81.3	81.5	81.6	81.5	81.3	81.0			
70	80.9	81.0	81.3	81.6	81.7	81.6	81.3	81.0	80.9	81.0	81.3	81.6	81.7	81.6	81.3	81.0			
75	80.8	80.9	81.2	81.5	81.6	81.5	81.2	80.9	80.8	80.9	81.2	81.5	81.6	81.5	81.2	80.9			
80	80.4	80.5	80.8	81.2	81.2	81.2	80.8	80.5	80.4	80.5	80.8	81.2	81.2	81.2	80.8	80.5			
85	79.7	79.9	80.2	80.6	80.7	80.6	80.2	79.9	79.7	79.9	80.2	80.6	80.7	80.6	80.2	79.9			
90	78.9	79.0	79.4	79.8	79.9	79.8	79.4	79.0	78.9	79.0	79.4	79.8	79.9	79.8	79.4	79.0			
95	77.8	77.9	78.3	78.7	78.8	78.7	78.3	77.9	77.8	77.9	78.3	78.7	78.8	78.7	78.3	77.9			
100	76.5	76.6	77.0	77.4	77.5	77.4	77.0	76.6	76.5	76.6	77.0	77.4	77.5	77.4	77.0	76.6			
105	74.9	75.0	75.5	75.8	75.9	75.8	75.5	75.0	74.9	75.0	75.5	75.8	75.9	75.8	75.5	75.0			
110	73.2	73.3	73.7	74.1	74.1	74.1	73.7	73.3	73.2	73.3	73.7	74.1	74.1	74.1	73.7	73.3			
115	71.3	71.4	71.8	72.1	72.2	72.1	71.8	71.4	71.3	71.4	71.8	72.1	72.2	72.1	71.8	71.4			
120	69.2	69.3	69.6	70.0	70.0	70.0	69.6	69.3	69.2	69.3	69.6	70.0	70.0	70.0	69.6	69.3			
125	67.1	67.1	67.4	67.7	67.8	67.7	67.4	67.1	67.1	67.1	67.4	67.7	67.8	67.7	67.4	67.1			
130	64.9	64.9	65.1	65.3	65.5	65.3	65.1	64.9	64.9	64.9	65.1	65.3	65.5	65.3	65.1	64.9			
135	62.6	62.6	62.8	62.9	63.1	62.9	62.8	62.6	62.6	62.6	62.8	62.9	63.1	62.9	62.8	62.6			
140	60.3	60.3	60.5	60.5	60.7	60.5	60.5	60.3	60.3	60.3	60.5	60.5	60.7	60.5	60.5	60.3			
145	57.8	57.8	57.8	57.9	58.1	57.9	57.8	57.8	57.8	57.8	57.8	57.9	58.1	57.9	57.8	57.8			
150	55.2	55.0	54.9	54.9	55.3	54.9	54.9	55.0	55.2	55.0	54.9	54.9	55.3	54.9	54.9	55.0			
155	51.9	51.7	51.5	51.5	51.4	51.5	51.5	51.7	51.9	51.7	51.5	51.5	51.4	51.5	51.5	51.7			
160	48.2	47.9	47.9	47.7	47.1	47.7	47.9	47.9	48.2	47.9	47.9	47.7	47.1	47.7	47.9	47.9			
165	44.1	44.0	44.3	44.2	43.3	44.2	44.3	44.0	44.1	44.0	44.3	44.2	43.3	44.2	44.3	44.0			
170	40.1	39.8	40.1	40.1	40.2	40.1	40.1	39.8	40.1	39.8	40.1	40.1	40.2	40.1	40.1	39.8			
175	28.2	28.3	28.1	28.3	28.2	28.3	28.1	28.3	28.2	28.3	28.1	28.3	28.2	28.3	28.1	28.3			
180	8.52	8.12	7.54	7.24	7.27	7.24	7.54	8.12	8.52	8.12	7.54	7.24	7.27	7.24	7.54	8.12			

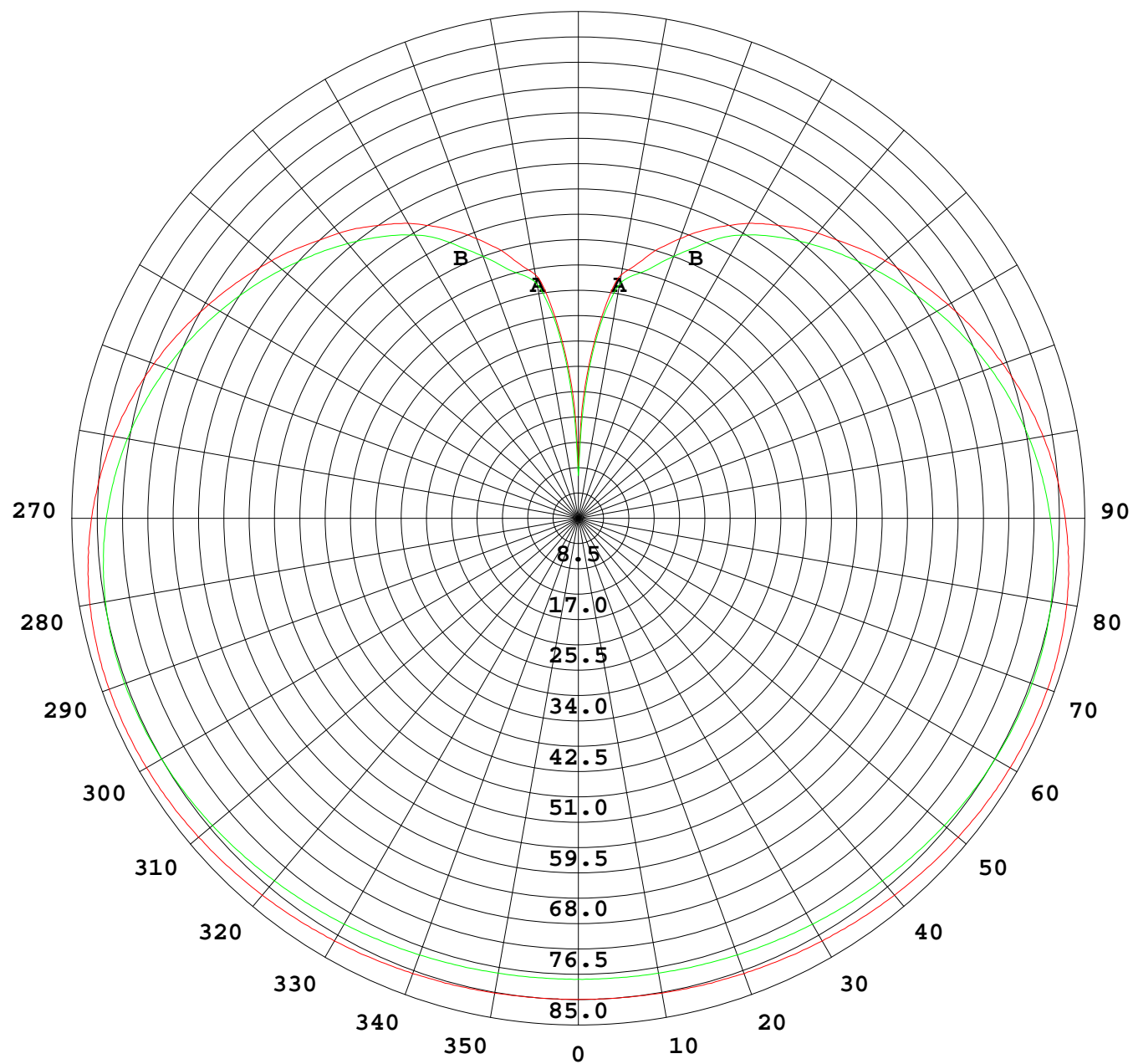
C Range: 0 - 360DEG
C Interval: 22.5DEG
Test Speed: HIGH
Temperature:25.1DEG
Operators:Wilson
Test Date:2021-03-13

γ Range: 0 - 180DEG
γ Interval: 0.5DEG
Test System:EVERFINE GO-R5000_V2 SYSTEM V2.0.354
Humidity:60.5%
Test Distance:2.521m [K=1.0000]
Remarks: File No.: WT-F-504-3206-01-A

Checker: Near Gao

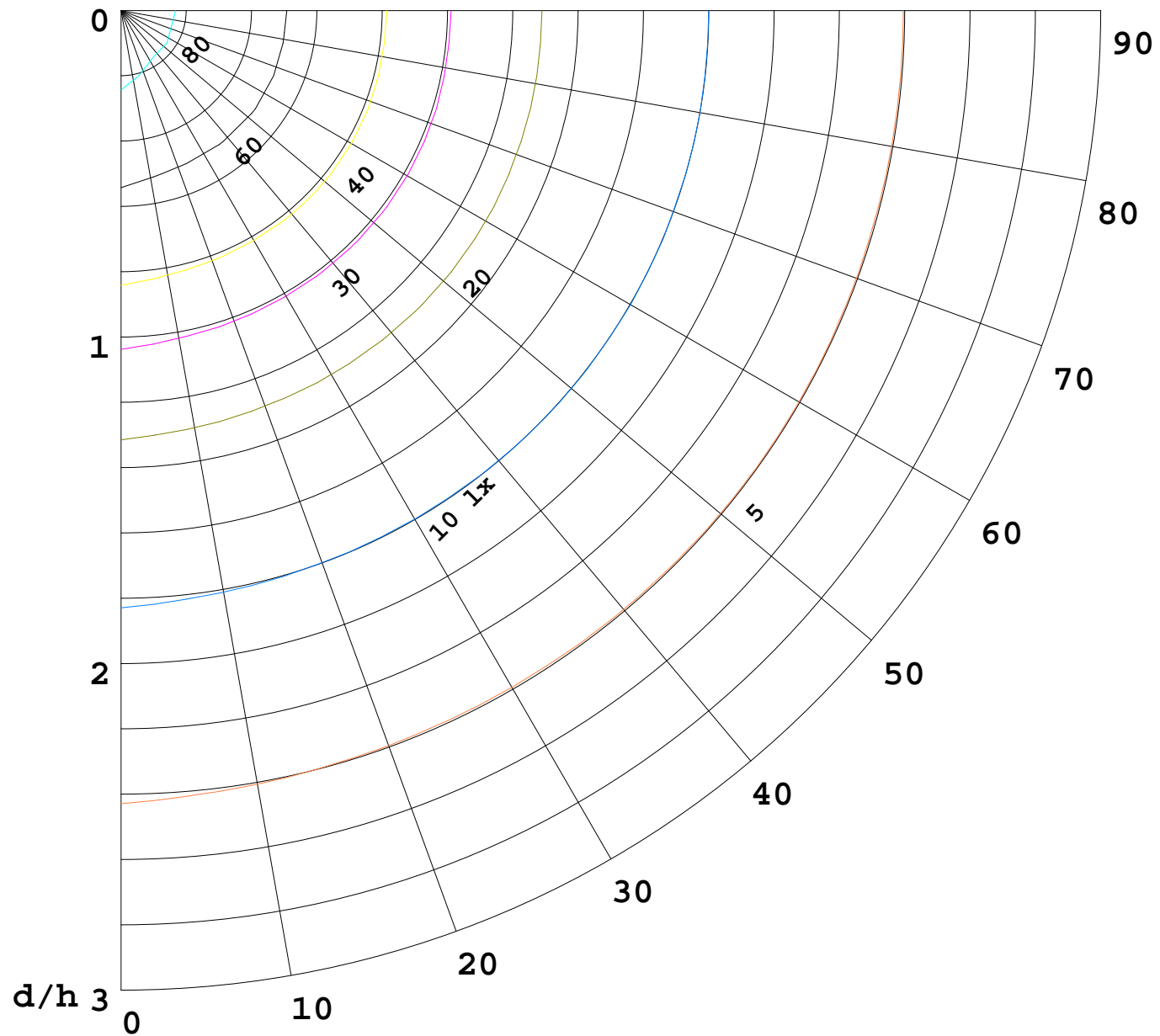
Assessor: Akin Xu

I(cd)



1000 lm

$\kappa = 1$



F = 1000 lm
K = 0.7
Hcc = 0.8 m
Hfc = 0.0 m
Eave = 100 lx

	Pcc	Pw	Pfc
————	70	50	30
————	50	30	20

