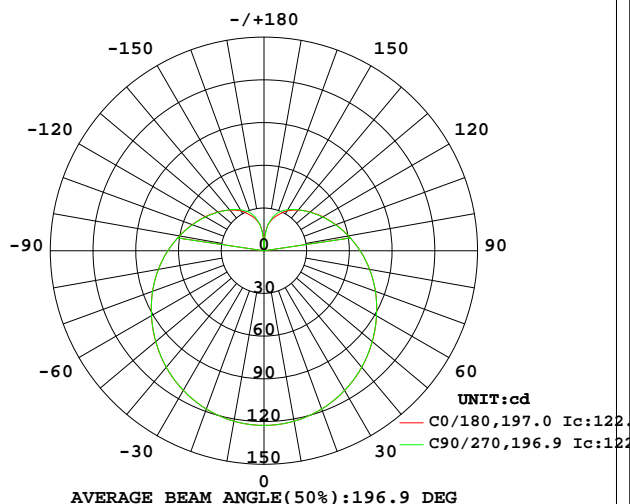


## LUMINAIRE PHOTOMETRIC TEST REPORT

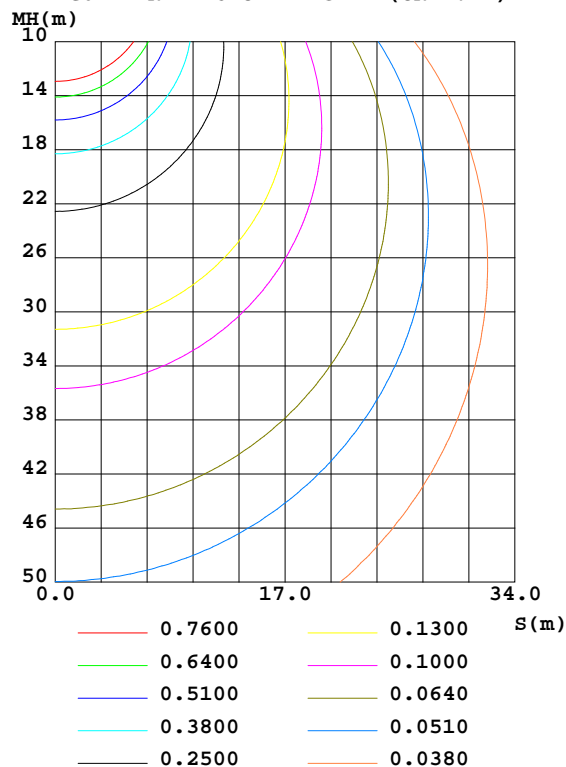
Test:U:240.1V I:0.0446A P:9.260W PF:0.8640 Freq:50.00Hz Lamp Flux:877.869x1 lm		
NAME: Bally Full Sphere	TYPE:	WEIGHT:
SPEC.:	DIM.:	SERIAL No.:
MFR.: Ambience Lighting	SUR.:	Shielding Angle:

DATA OF LAMP		PHOTOMETRIC DATA Eff: 94.80 lm/W			
MODEL	200mm	Imax(cd)	122.7	S/MH(C0/180)	1.39
NOMINAL POWER(W)	7	LOR(%)	100.0	S/MH(C90/270)	1.39
RATED VOLTAGE(V)	240	TOTAL FLUX(lm)	877.87	$\eta$ UP,DN(C0-180)	16.9,33.1
NOMINAL FLUX(lm)	877.869	CIE CLASS	SEMI-D.	$\eta$ UP,DN(C180-360)	16.9,33.1
LAMPS INSIDE	1	$\eta$ up(%)	33.7	CIBSE SHR NOM	1.50
TEST VOLTAGE(V)	240	$\eta$ down(%)	66.3	CIBSE SHR MAX	1.55

LUMINOUS INTENSITY DISTRIBUTION DIAGRAM



C0 PLANE ISOLUX DIAGRAM (UNIT:lx)



C Range: 0 - 360DEG  
C Interval: 22.5DEG  
Test Speed: HIGH  
Temperature:25.1DEG  
Operators:Wilson  
Test Date:2021-03-13

$\gamma$  Range: 0 - 180DEG  
 $\gamma$  Interval: 0.5DEG  
Test System:EVERFINE GO-R5000\_V2 SYSTEM V2.0.354  
Humidity:60.5%  
Test Distance:2.521m [K=1.0000]  
Remarks: File No.: WT-F-504-3206-01-A

Checker: Near Gao

Assessor: Akin Xu

### ZONAL FLUX DIAGRAM

**ZONAL FLUX DIAGRAM:**

$\gamma$	C0	C45	C90	C135	C180	C225	C270	C315	$\gamma$	$\Phi$ zone	$\Phi$ total	%lum, lamp
5	122.3	122.3	122.3	122.3	122.3	122.3	122.3	122.3	0- 5	2.929	2.929	0.33,0.33
10	121.5	121.5	121.6	121.5	121.5	121.5	121.6	121.5	5- 10	8.726	11.65	1.33,1.33
15	120.1	120.1	120.2	120.1	120.1	120.1	120.2	120.1	10- 15	14.34	25.99	2.96,2.96
20	118.4	118.3	118.3	118.3	118.4	118.3	118.3	118.3	15- 20	19.65	45.65	5.2,5.2
25	115.9	116.0	115.9	116.0	115.9	116.0	115.9	116.0	20- 25	24.57	70.22	8,8
30	113.3	113.2	113.3	113.2	113.3	113.2	113.3	113.2	25- 30	29.01	99.23	11.3,11.3
35	110.2	110.1	110.1	110.1	110.2	110.1	110.1	110.1	30- 35	32.90	132.1	15.1,15.1
40	106.8	106.7	106.7	106.7	106.8	106.7	106.7	106.7	35- 40	36.19	168.3	19.2,19.2
45	103.1	103.1	103.0	103.1	103.1	103.1	103.0	103.1	40- 45	38.85	207.2	23.6,23.6
50	99.30	99.23	99.22	99.23	99.30	99.23	99.22	99.23	45- 50	40.88	248.1	28.3,28.3
55	95.30	95.28	95.25	95.28	95.30	95.28	95.25	95.28	50- 55	42.29	290.3	33.1,33.1
60	91.32	91.26	91.28	91.26	91.32	91.26	91.28	91.26	55- 60	43.11	333.5	38,38
65	87.26	87.27	87.22	87.27	87.26	87.27	87.22	87.27	60- 65	43.39	376.9	42.9,42.9
70	83.29	83.27	83.25	83.27	83.29	83.27	83.25	83.27	65- 70	43.18	420.0	47.8,47.8
75	79.26	79.30	79.27	79.30	79.26	79.30	79.27	79.30	70- 75	42.49	462.5	52.7,52.7
80	75.32	75.32	75.33	75.32	75.32	75.32	75.33	75.32	75- 80	41.36	503.9	57.4,57.4
85	71.38	71.40	71.35	71.40	71.38	71.40	71.35	71.40	80- 85	39.86	543.7	61.9,61.9
90	67.55	67.57	67.58	67.57	67.55	67.57	67.58	67.57	85- 90	38.04	581.8	66.3,66.3
95	63.82	63.84	63.81	63.84	63.82	63.84	63.81	63.84	90- 95	35.98	617.8	70.4,70.4
100	60.26	60.30	60.24	60.30	60.26	60.30	60.24	60.30	95-100	33.73	651.5	74.2,74.2
105	56.85	56.85	56.77	56.85	56.85	56.85	56.77	56.85	100-105	31.34	682.8	77.8,77.8
110	53.64	53.59	53.48	53.59	53.64	53.59	53.48	53.59	105-110	28.86	711.7	81.1,81.1
115	50.57	50.49	50.40	50.49	50.57	50.49	50.40	50.49	110-115	26.34	738.0	84.1,84.1
120	47.80	47.64	47.48	47.64	47.80	47.64	47.48	47.64	115-120	23.84	761.9	86.8,86.8
125	44.98	44.88	44.72	44.88	44.98	44.88	44.72	44.88	120-125	21.37	783.2	89.2,89.2
130	42.37	42.31	42.13	42.31	42.37	42.31	42.13	42.31	125-130	18.96	802.2	91.4,91.4
135	39.89	39.91	39.75	39.91	39.89	39.91	39.75	39.91	130-135	16.64	818.8	93.3,93.3
140	37.34	37.56	37.64	37.56	37.34	37.56	37.64	37.56	135-140	14.39	833.2	94.9,94.9
145	34.80	35.27	35.46	35.27	34.80	35.27	35.46	35.27	140-145	12.19	845.4	96.3,96.3
150	32.38	32.96	33.25	32.96	32.38	32.96	33.25	32.96	145-150	10.06	855.5	97.5,97.5
155	29.13	30.16	31.09	30.16	29.13	30.16	31.09	30.16	150-155	8.010	863.5	98.4,98.4
160	26.17	27.35	28.26	27.35	26.17	27.35	28.26	27.35	155-160	6.049	869.5	99.1,99.1
165	23.17	24.23	24.58	24.23	23.17	24.23	24.58	24.23	160-165	4.257	873.8	99.5,99.5
170	19.49	20.18	19.48	20.18	19.49	20.18	19.48	20.18	165-170	2.636	876.4	99.8,99.8
175	13.05	12.28	11.70	12.28	13.05	12.28	11.70	12.28	170-175	1.222	877.7	100,100
180	0.3769	0.4305	0.4525	0.4305	0.3769	0.4305	0.4525	0.4305	175-180	0.2080	877.9	100,100
DEG	LUMINOUS INTENSITY:cd									UNIT:lm		

Conical surface Flux(90deg): 207.17 lm

%lum = 23.6%

%lamp = 23.6%

Conical surface Flux(120deg): 333.46 lm

%lum = 38.0%

%lamp = 38.0%

C Range: 0 - 360DEG  
 C Interval: 22.5DEG  
 Test Speed: HIGH  
 Temperature:25.1DEG  
 Operators:Wilson  
 Test Date:2021-03-13

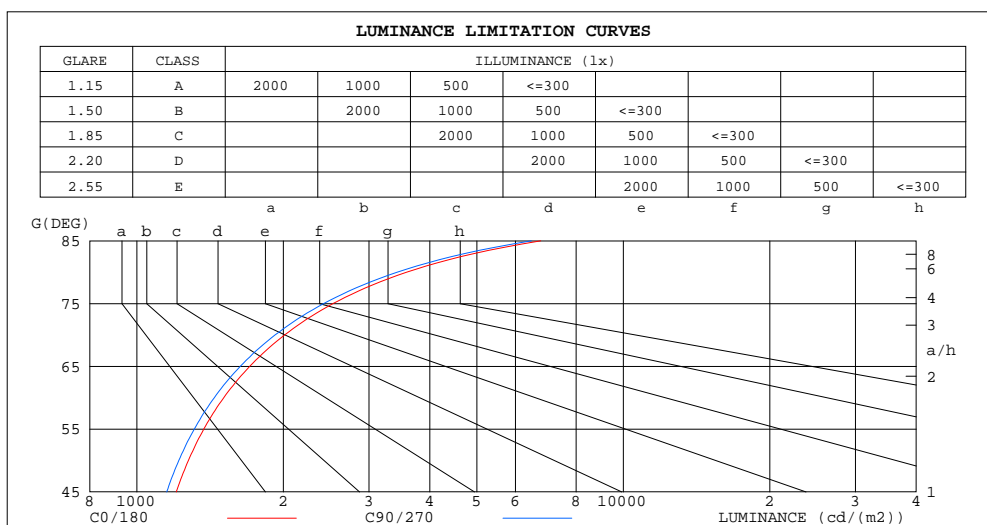
$\gamma$  Range: 0 - 180DEG  
 $\gamma$  Interval: 0.5DEG  
 $\gamma$  Test System:EVERFINE GO-R5000\_V2 SYSTEM V2.0.354  
 Humidity:60.5%  
 Test Distance:2.521m [K=1.0000]  
 Remarks: File No.: WT-F-504-3206-01-A

Checker: Near Gao

Assessor: Akin Xu

## LUMINANCE LIMITATION CURVES

Test:U:240.1V I:0.0446A P:9.260W PF:0.8640 Freq:50.00Hz Lamp Flux:877.869x1 lm		
NAME: Bally Full Sphere	TYPE:	WEIGHT:
SPEC.:	DIM.:	SERIAL No.:
MFR.: Ambience Lighting	SUR.:	Shielding Angle:



LUMINANCE cd/(m2)		
G(DEG)	C0/180	C90/270
85	6767	6470
80	3584	3428
75	2530	2420
70	2012	1924
65	1706	1631
60	1509	1443
55	1373	1312
50	1276	1220
45	1205	1151

C Range: 0 - 360DEG  
C Interval: 22.5DEG  
Test Speed: HIGH  
Temperature:25.1DEG  
Operators:Wilson  
Test Date:2021-03-13

γ Range: 0 - 180DEG  
γ Interval: 0.5DEG  
Test System:EVERFINE GO-R5000\_V2 SYSTEM V2.0.354  
Humidity:60.5%  
Test Distance:2.521m [K=1.0000]  
Remarks: File No.: WT-F-504-3206-01-A

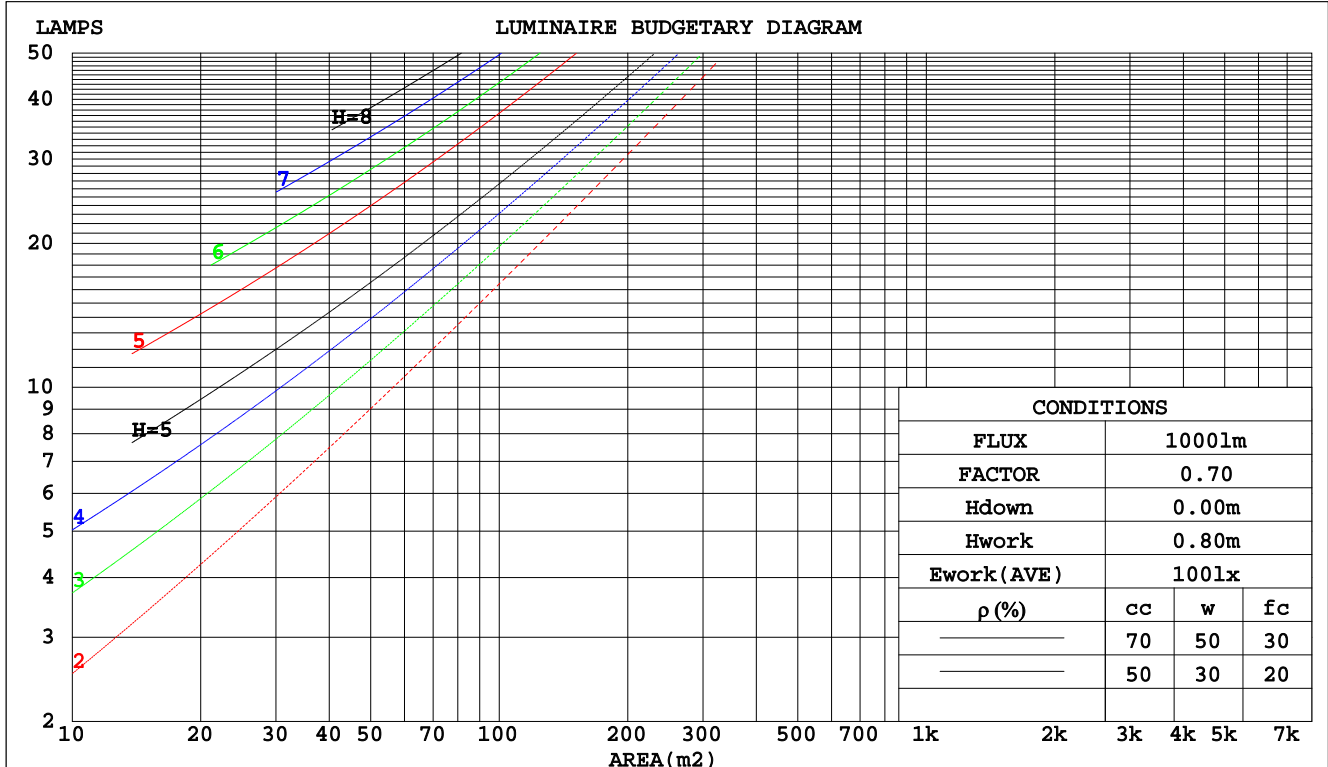
Checker: Near Gao

Assessor: Akin Xu

## CU AND LUMINAIRE BUDGETARY ESTIMATE DIAGRAM

Test:U:240.1V I:0.0446A P:9.260W PF:0.8640 Freq:50.00Hz Lamp Flux:877.869x1 lm		
NAME: Bally Full Sphere	TYPE:	WEIGHT:
SPEC.:	DIM.:	SERIAL No.:
MFR.: Ambience Lighting	SUR.:	Shielding Angle:

pcc	80%			70%			50%			30%			10%			0
pw	50%	30%	10%	50%	30%	10%	50%	30%	10%	50%	30%	10%	50%	30%	10%	0
pfc	20%			20%			20%			20%			20%			0
RCR	RCR:Room Cavity Ratio						Coefficients of Utilization(CU)									
0.0	1.11	1.11	1.11	1.05	1.05	1.05	.92	.92	.92	.81	.81	.81	.71	.71	.71	.66
1.0	.91	.85	.80	.85	.80	.76	.75	.71	.67	.65	.62	.59	.56	.54	.52	.47
2.0	.77	.69	.62	.72	.65	.59	.63	.58	.53	.55	.50	.46	.47	.44	.41	.36
3.0	.67	.58	.50	.63	.54	.48	.55	.48	.43	.47	.42	.38	.41	.36	.33	.29
4.0	.58	.49	.42	.55	.46	.39	.48	.41	.35	.42	.36	.31	.36	.31	.27	.24
5.0	.52	.42	.35	.48	.40	.33	.42	.35	.30	.37	.31	.27	.32	.27	.23	.20
6.0	.46	.37	.30	.43	.35	.29	.38	.31	.26	.33	.27	.23	.29	.24	.20	.17
7.0	.41	.32	.26	.39	.31	.25	.34	.27	.22	.30	.24	.20	.26	.21	.18	.15
8.0	.37	.29	.23	.35	.27	.22	.31	.24	.20	.27	.22	.18	.24	.19	.16	.13
9.0	.34	.26	.20	.32	.25	.19	.29	.22	.17	.25	.20	.16	.22	.17	.14	.12
10.0	.31	.23	.18	.30	.22	.17	.26	.20	.16	.23	.18	.14	.20	.16	.12	.10



C Range: 0 - 360DEG  
C Interval: 22.5DEG  
Test Speed: HIGH  
Temperature:25.1DEG  
Operators:Wilson  
Test Date:2021-03-13

γ Range: 0 - 180DEG  
γ Interval: 0.5DEG  
Test System:EVERFINE GO-R5000\_V2 SYSTEM V2.0.354  
Humidity:60.5%  
Test Distance:2.52lm [K=1.0000]  
Remarks: File No.: WT-F-504-3206-01-A

Checker: Near Gao

Assessor: Akin Xu

## WEC AND CCEC

Test:U:240.1V I:0.0446A P:9.260W PF:0.8640 Freq:50.00Hz Lamp Flux:877.869x1 lm		
NAME: Bally Full Sphere	TYPE:	WEIGHT:
SPEC.:	DIM.:	SERIAL No.:
MFR.: Ambience Lighting	SUR.:	Shielding Angle:

pcc	80%			70%			50%			30%			10%			0	
pw	50%	30%	10%	50%	30%	10%	50%	30%	10%	50%	30%	10%	50%	30%	10%	0	
pfc	20%			20%			20%			20%			20%			0	
RCR	RCR:Room Cavity Ratio						Wall Exitance Coefficients(WEC)										
0.0																	
1.0	.402	.229	.072	.384	.219	.070	.352	.202	.064	.321	.185	.060	.294	.170	.055		
2.0	.340	.186	.057	.324	.179	.055	.294	.164	.051	.267	.150	.047	.241	.137	.043		
3.0	.299	.159	.048	.284	.152	.046	.257	.139	.042	.232	.127	.039	.209	.115	.036		
4.0	.267	.139	.041	.254	.133	.039	.229	.121	.036	.206	.111	.033	.185	.100	.031		
5.0	.242	.123	.036	.230	.118	.034	.207	.108	.032	.186	.098	.029	.166	.089	.027		
6.0	.221	.111	.032	.210	.106	.030	.189	.097	.028	.169	.088	.026	.151	.079	.024		
7.0	.203	.100	.028	.193	.096	.027	.174	.088	.025	.156	.080	.023	.139	.072	.021		
8.0	.188	.092	.026	.179	.088	.025	.161	.080	.023	.144	.073	.021	.128	.066	.019		
9.0	.175	.085	.024	.166	.081	.023	.150	.074	.021	.134	.067	.019	.119	.061	.018		
10.0	.163	.078	.022	.155	.075	.021	.140	.069	.019	.125	.062	.018	.112	.056	.016		

pcc	80%			70%			50%			30%			10%			0	
pw	50%	30%	10%	50%	30%	10%	50%	30%	10%	50%	30%	10%	50%	30%	10%	0	
pfc	20%			20%			20%			20%			20%			0	
RCR	RCR:Room Cavity Ratio						Ceiling Cavity Exitance Coefficients(CCEC)										
0.0	.447	.447	.447	.382	.382	.382	.261	.261	.261	.150	.150	.150	.048	.048	.048		
1.0	.446	.414	.386	.381	.356	.332	.261	.245	.230	.150	.142	.134	.048	.046	.043		
2.0	.440	.392	.353	.376	.338	.305	.258	.234	.213	.149	.136	.125	.048	.044	.041		
3.0	.432	.377	.332	.371	.325	.288	.254	.226	.202	.147	.132	.119	.047	.043	.039		
4.0	.425	.365	.319	.364	.315	.277	.251	.220	.195	.145	.129	.115	.047	.042	.038		
5.0	.417	.355	.310	.358	.307	.270	.247	.215	.190	.143	.126	.113	.046	.041	.037		
6.0	.410	.348	.303	.352	.301	.264	.243	.211	.187	.141	.124	.111	.045	.041	.037		
7.0	.403	.341	.298	.346	.296	.260	.239	.207	.184	.139	.122	.110	.045	.040	.036		
8.0	.396	.336	.295	.341	.291	.257	.236	.205	.182	.137	.121	.109	.044	.040	.036		
9.0	.390	.331	.292	.336	.288	.255	.233	.202	.181	.136	.119	.108	.044	.039	.036		
10.0	.384	.327	.290	.331	.284	.253	.230	.200	.180	.134	.118	.107	.043	.039	.036		

C Range: 0 - 360DEG  
C Interval: 22.5DEG  
Test Speed: HIGH  
Temperature:25.1DEG  
Operators:Wilson  
Test Date:2021-03-13

γ Range: 0 - 180DEG  
γ Interval: 0.5DEG  
Test System:EVERFINE GO-R5000\_V2 SYSTEM V2.0.354  
Humidity:60.5%  
Test Distance:2.521m [K=1.0000]  
Remarks: File No.: WT-F-504-3206-01-A

Checker: Near Gao

Assessor: Akin Xu

## UGR(Unified Glare Rating) Table

Test:U:240.1V I:0.0446A P:9.260W PF:0.8640 Freq:50.00Hz Lamp Flux:877.869x1 lm											
NAME: Bally Full Sphere					TYPE:			WEIGHT:			
SPEC.:					DIM.:			SERIAL No.:			
MFR.: Ambience Lighting					SUR.:			Shielding Angle:			
ceiling/cavity	0.7	0.7	0.5	0.5	0.3	0.7	0.7	0.5	0.5	0.3	
walls	0.5	0.3	0.5	0.3	0.3	0.5	0.3	0.5	0.3	0.3	
working plane	0.2	0.2	0.2	0.2	0.2	0.2	0.2	0.2	0.2	0.2	
Room dimensions		Viewed crosswise				Viewed endwise					
x = 2H y = 2H	12.3	13.5	13.0	14.2	15.1	12.2	13.4	12.9	14.1	15.0	
	3H	15.1	16.2	15.8	16.9	17.8	14.9	16.0	15.6	16.8	17.7
	4H	16.6	17.7	17.4	18.4	19.4	16.5	17.5	17.2	18.3	19.2
	6H	18.4	19.4	19.1	20.1	21.1	18.2	19.2	18.9	19.9	20.9
	8H	19.4	20.3	20.1	21.1	22.1	19.1	20.1	19.9	20.9	21.8
	12H	20.5	21.4	21.3	22.2	23.2	20.3	21.2	21.0	22.0	22.9
4H	2H	13.1	14.2	13.8	14.9	15.8	13.0	14.1	13.8	14.8	15.8
	3H	16.1	17.0	16.8	17.8	18.7	16.0	16.9	16.7	17.7	18.6
	4H	17.8	18.6	18.6	19.4	20.4	17.7	18.5	18.4	19.3	20.3
	6H	19.7	20.4	20.5	21.3	22.3	19.5	20.3	20.4	21.1	22.2
	8H	20.8	21.5	21.6	22.3	23.4	20.6	21.3	21.4	22.2	23.2
	12H	22.0	22.7	22.9	23.5	24.6	21.8	22.5	22.7	23.3	24.4
8H	4H	18.4	19.1	19.2	19.9	21.0	18.3	19.0	19.1	19.8	20.9
	6H	20.6	21.2	21.4	22.0	23.1	20.5	21.1	21.3	21.9	23.0
	8H	21.8	22.4	22.7	23.3	24.3	21.7	22.3	22.6	23.1	24.2
	12H	23.3	23.8	24.2	24.7	25.8	23.2	23.6	24.0	24.5	25.6
12H	4H	18.5	19.2	19.4	20.0	21.1	18.5	19.1	19.3	20.0	21.0
	6H	20.8	21.4	21.7	22.3	23.4	20.7	21.3	21.6	22.2	23.3
	8H	22.2	22.7	23.1	23.6	24.7	22.1	22.6	23.0	23.5	24.6
Variations with the observer position at spacings:											
S = 1.0H	+ 0.1 / - 0.1					+ 0.1 / - 0.1					
1.5H	+ 0.2 / - 0.3					+ 0.2 / - 0.3					
2.0H	+ 0.3 / - 0.4					+ 0.3 / - 0.4					

CIE Pub.117, 877.9 lm Total Lamp Luminous Flux Correct ( $8\log(F/F_0) = -0.5$ )

C Range: 0 - 360DEG  
C Interval: 22.5DEG  
Test Speed: HIGH  
Temperature:25.1DEG  
Operators:Wilson  
Test Date:2021-03-13

$\gamma$  Range: 0 - 180DEG  
 $\gamma$  Interval: 0.5DEG  
Test System:EVERFINE GO-R5000\_V2 SYSTEM V2.0.354  
Humidity:60.5%  
Test Distance:2.521m [K=1.0000]  
Remarks: File No.: WT-F-504-3206-01-A

Checker: Near Gao

Assessor: Akin Xu

**UTILIZATION FACTORS TABLE**

Test:U:240.1V I:0.0446A P:9.260W PF:0.8640 Freq:50.00Hz Lamp Flux:877.869x1 lm		
NAME: Bally Full Sphere	TYPE:	WEIGHT:
SPEC.:	DIM.:	SERIAL No.:
MFR.: Ambience Lighting	SUR.:	Shielding Angle:

REFLECTANCE										
Ceiling	0.8	0.8	0.8	0.7	0.7	0.7	0.5	0.5	0.5	0
Walls	0.7	0.5	0.3	0.7	0.5	0.3	0.7	0.5	0.3	0
Working plane	0.2	0.2	0.2	0.2	0.2	0.2	0.2	0.2	0.2	0
ROOM INDEX	UTILIZATION FACTORS(PERCENT) $k(RI) \times RCR = 5$									
$k = 0.60$	42	29	22	40	29	22	38	27	21	14
0.80	51	37	29	48	36	28	45	34	27	18
1.00	58	44	36	55	43	35	50	42	33	23
1.25	65	51	42	62	49	41	56	46	38	27
1.50	70	57	48	66	55	46	60	50	43	30
2.00	78	65	56	73	62	54	66	57	50	35
2.50	82	71	62	78	68	60	69	61	55	38
3.00	86	76	68	81	72	65	72	65	59	41
4.00	91	82	75	86	78	72	76	70	65	46
5.00	94	87	80	89	82	76	79	73	69	48
ROOM INDEX	UF(total)									Direct
According to DIN EN 13032-2 2004			Suspended					SHRNOM = 1.25		

C Range: 0 - 360DEG  
 C Interval: 22.5DEG  
 Test Speed: HIGH  
 Temperature:25.1DEG  
 Operators:Wilson  
 Test Date:2021-03-13

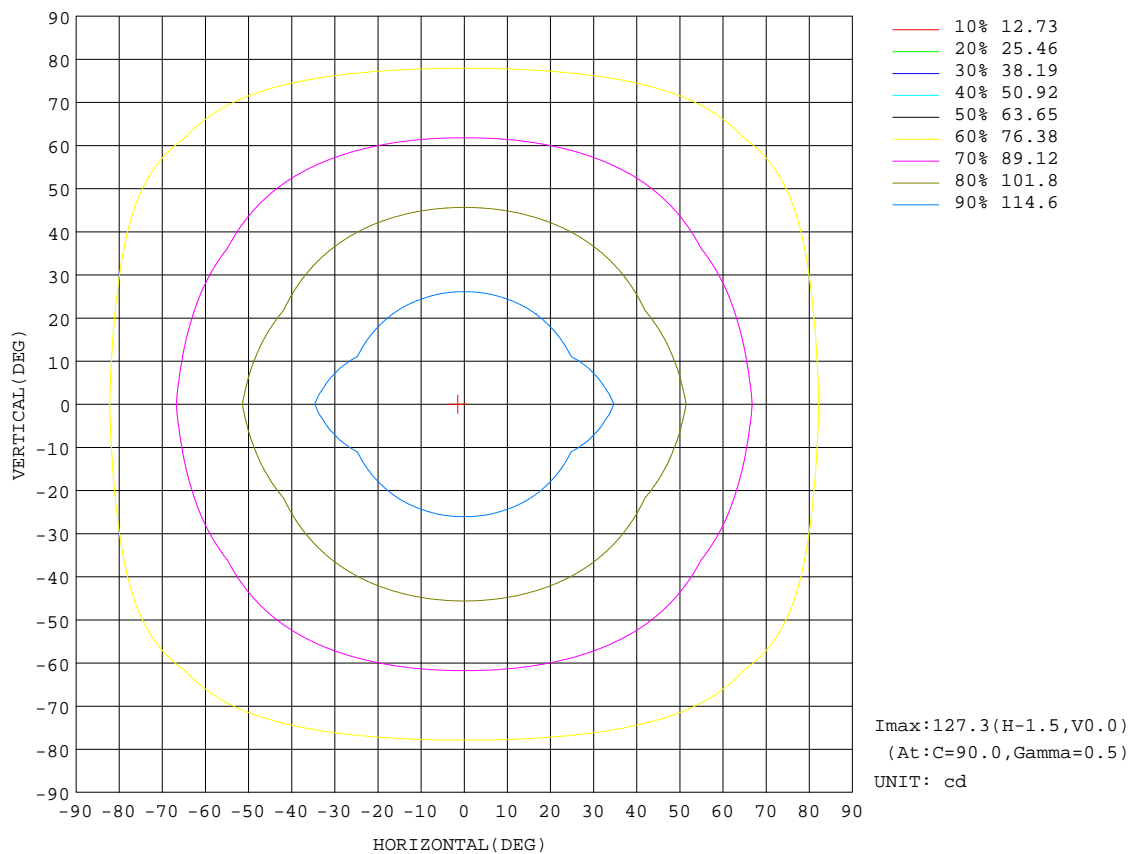
Checker: Near Gao

$\gamma$  Range: 0 - 180DEG  
 $\gamma$  Interval: 0.5DEG  
 Test System:EVERFINE GO-R5000\_V2 SYSTEM V2.0.354  
 Humidity:60.5%  
 Test Distance:2.521m [K=1.0000]  
 Remarks: File No.: WT-F-504-3206-01-A

Assessor: Akin Xu

## ISOCANDELA DIAGRAM

Test:U:240.1V I:0.0446A P:9.260W PF:0.8640 Freq:50.00Hz Lamp Flux:877.869x1 lm		
NAME: Bally Full Sphere	TYPE:	WEIGHT:
SPEC.:	DIM.:	SERIAL No.:
MFR.: Ambience Lighting	SUR.:	Shielding Angle:



C Range: 0 - 360DEG  
C Interval: 22.5DEG  
Test Speed: HIGH  
Temperature:25.1DEG  
Operators:Wilson  
Test Date:2021-03-13

$\gamma$  Range: 0 - 180DEG  
 $\gamma$  Interval: 0.5DEG  
Test System:EVERFINE GO-R5000\_V2 SYSTEM V2.0.354  
Humidity:60.5%  
Test Distance:2.521m [K=1.0000]  
Remarks: File No.: WT-F-504-3206-01-A

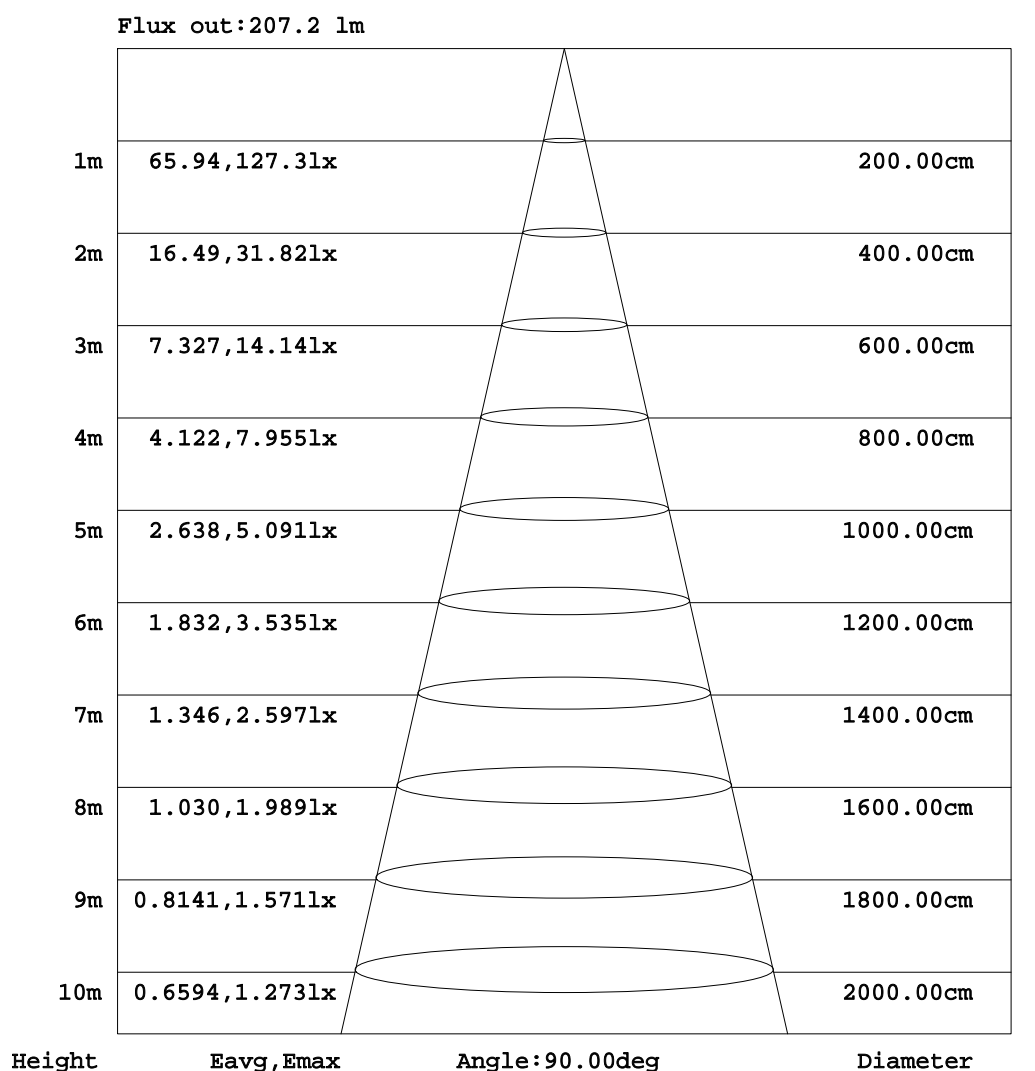
Checker: Near Gao

Assessor: Akin Xu



## AAI Figure

Test:U:240.1V I:0.0446A P:9.260W PF:0.8640 Freq:50.00Hz Lamp Flux:877.869x1 lm		
NAME: Bally Full Sphere	TYPE:	WEIGHT:
SPEC.:	DIM.:	SERIAL No.:
MFR.: Ambience Lighting	SUR.:	Shielding Angle:



Note:The Curves indicate the illuminated area and the average illumination when the luminaire is at different distance.

C Range: 0 - 360DEG  
C Interval: 22.5DEG  
Test Speed: HIGH  
Temperature:25.1DEG  
Operators:Wilson  
Test Date:2021-03-13

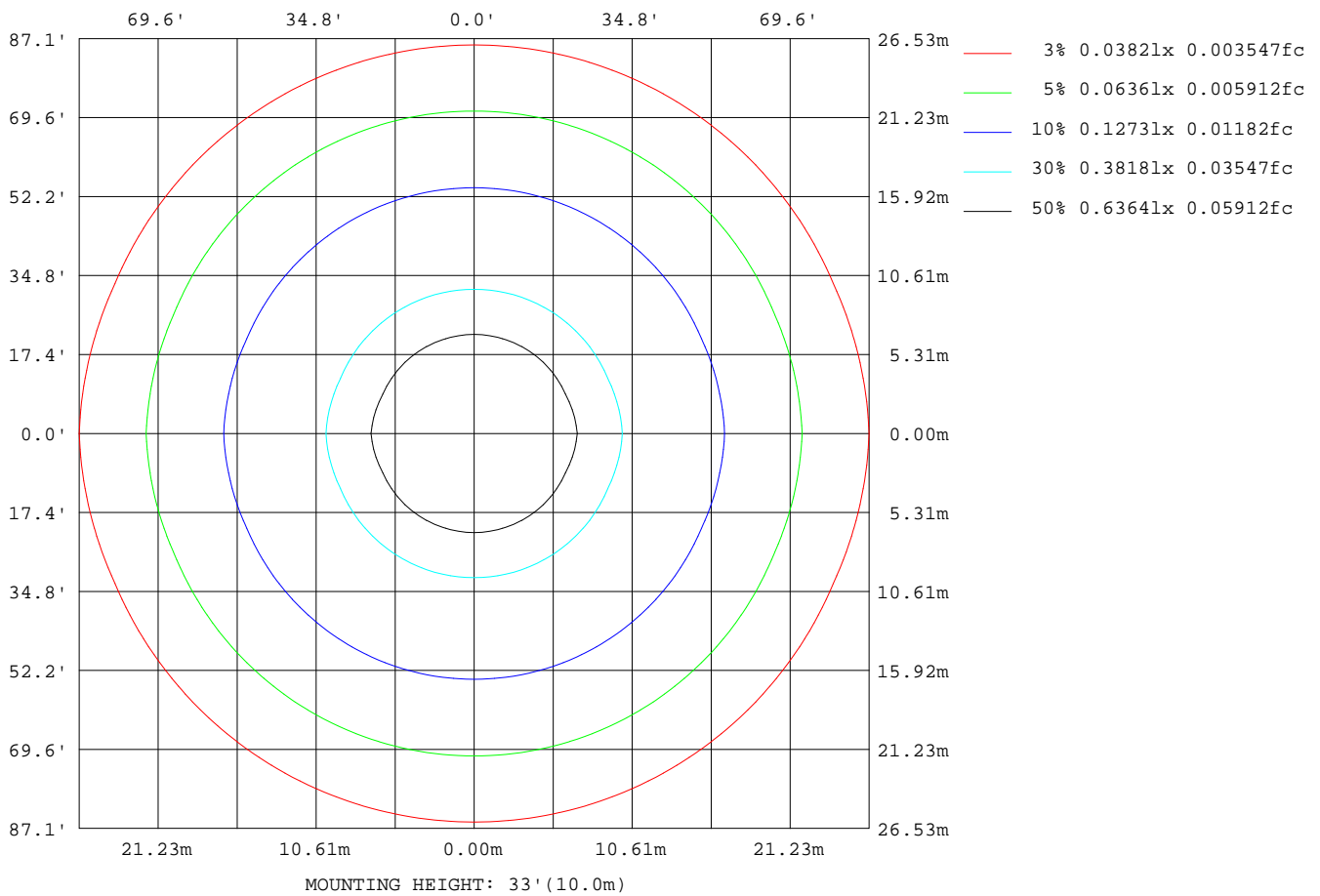
γ Range: 0 - 180DEG  
γ Interval: 0.5DEG  
Test System:EVERFINE GO-R5000\_V2 SYSTEM V2.0.354  
Humidity:60.5%  
Test Distance:2.521m [K=1.0000]  
Remarks: File No.: WT-F-504-3206-01-A

Checker: Near Gao

Assessor: Akin Xu

**ISOLUX DIAGRAM**

Test:U:240.1V I:0.0446A P:9.260W PF:0.8640 Freq:50.00Hz Lamp Flux:877.869x1 lm		
NAME: Bally Full Sphere	TYPE:	WEIGHT:
SPEC.:	DIM.:	SERIAL No.:
MFR.: Ambience Lighting	SUR.:	Shielding Angle:



C Range: 0 - 360DEG  
 C Interval: 22.5DEG  
 Test Speed: HIGH  
 Temperature: 25.1DEG  
 Operators: Wilson  
 Test Date: 2021-03-13

Checker: Near Gao

γ Range: 0 - 180DEG  
 γ Interval: 0.5DEG  
 Test System: EVERFINE GO-R5000\_V2 SYSTEM V2.0.354  
 Humidity: 60.5%  
 Test Distance: 2.521m [K=1.0000]  
 Remarks: File No.: WT-F-504-3206-01-A

Assessor: Akin Xu

### LED Avg.L Report

Test:U:240.1V I:0.0446A P:9.260W PF:0.8640 Freq:50.00Hz Lamp Flux:877.869x1 lm		
NAME: Bally Full Sphere	TYPE:	WEIGHT:
SPEC.:	DIM.:	SERIAL No.:
MFR.: Ambience Lighting	SUR.:	Shielding Angle:

AvgL	cd/m2
L_0~180(65)av	1644
L_0~180(75)av	2438
L_0~180(85)av	6521
L_90~270(65)av	1643
L_90~270(75)av	2438
L_90~270(85)av	6518
L_45(65)av	1644
L_45(75)av	2439
L_45(85)av	6523

Standard: GB/T 29293-2012

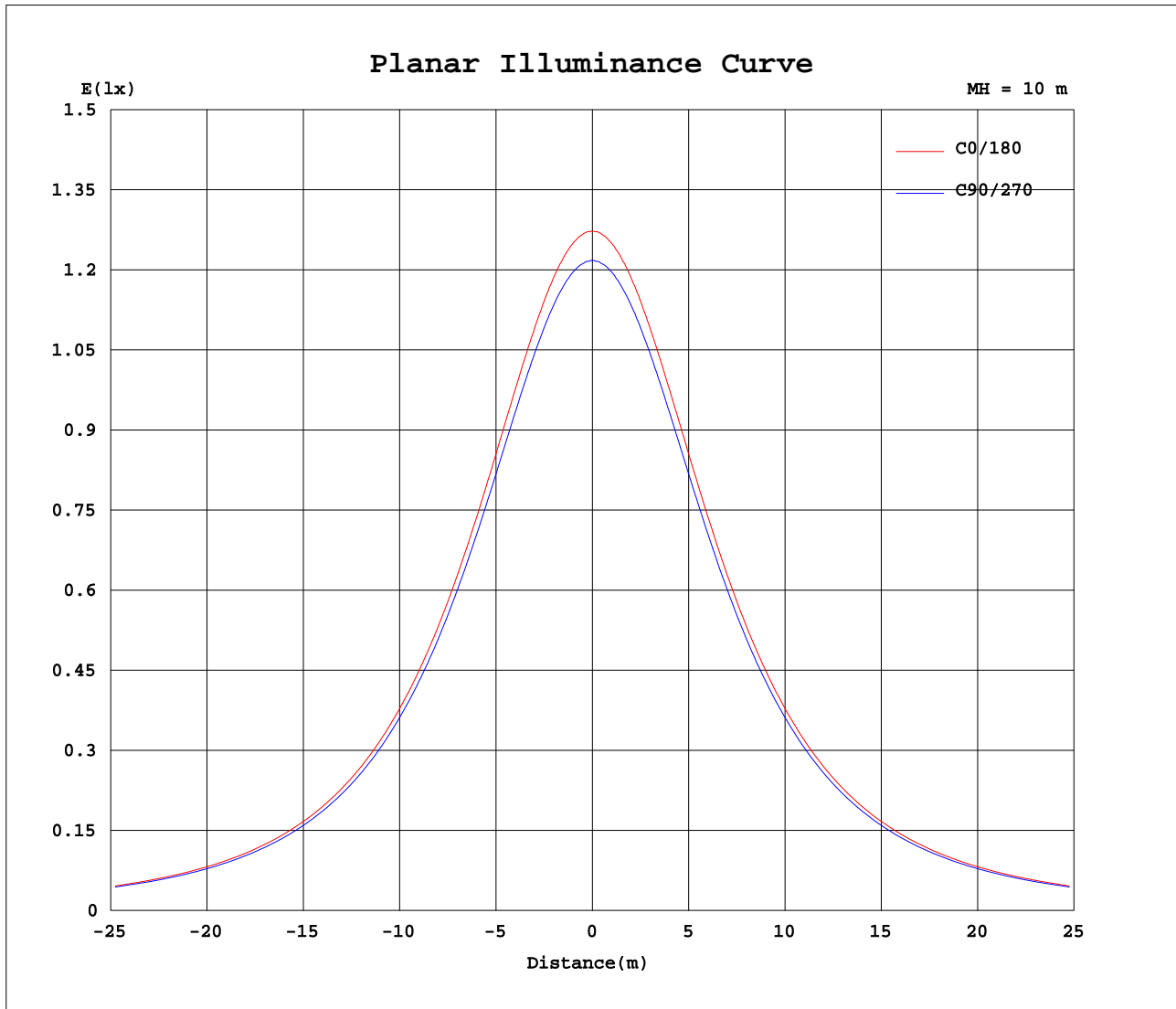
C Range: 0 - 360DEG  
C Interval: 22.5DEG  
Test Speed: HIGH  
Temperature:25.1DEG  
Operators:Wilson  
Test Date:2021-03-13

γ Range: 0 - 180DEG  
γ Interval: 0.5DEG  
Test System:EVERFINE GO-R5000\_V2 SYSTEM V2.0.354  
Humidity:60.5%  
Test Distance:2.521m [K=1.0000]  
Remarks: File No.: WT-F-504-3206-01-A

Checker: Near Gao

Assessor: Akin Xu

### Planar Illuminance Curve



C Range: 0 - 360DEG  
C Interval: 22.5DEG  
Test Speed: HIGH  
Temperature: 25.1DEG  
Operators: Wilson  
Test Date: 2021-03-13

$\gamma$  Range: 0 - 180DEG  
 $\gamma$  Interval: 0.5DEG  
Test System: EVERFINE GO-R5000\_V2 SYSTEM V2.0.354  
Humidity: 60.5%  
Test Distance: 2.521m [K=1.0000]  
Remarks: File No.: WT-F-504-3206-01-A

Checker: Near Gao

Assessor: Akin Xu

## LUMINOUS DISTRIBUTION INTENSITY DATA

Test:U:240.1V I:0.0446A P:9.260W PF:0.8640 Freq:50.00Hz Lamp Flux:877.869x1 lm		
NAME: Bally Full Sphere	TYPE:	WEIGHT:
SPEC.:	DIM.:	SERIAL No.:
MFR.: Ambience Lighting	SUR.:	Shielding Angle:

Table--1

UNIT: cd

C(DEC)	0	22.5	45	67.5	90	112.5	135	157.5	180	202.5	225	247.5	270	292.5	315	337.5			
γ (DEC)	0	123	123	123	123	123	123	123	123	123	123	123	123	123	123	123			
5	122	122	122	122	122	122	122	122	122	122	122	122	122	122	122	122			
10	122	122	121	122	122	122	121	122	122	122	121	122	122	122	121	122			
15	120	120	120	120	120	120	120	120	120	120	120	120	120	120	120	120			
20	118	118	118	118	118	118	118	118	118	118	118	118	118	118	118	118			
25	116	116	116	116	116	116	116	116	116	116	116	116	116	116	116	116			
30	113	113	113	113	113	113	113	113	113	113	113	113	113	113	113	113			
35	110	110	110	110	110	110	110	110	110	110	110	110	110	110	110	110			
40	107	107	107	107	107	107	107	107	107	107	107	107	107	107	107	107			
45	103	103	103	103	103	103	103	103	103	103	103	103	103	103	103	103			
50	99.3	99.3	99.2	99.3	99.2	99.3	99.2	99.3	99.3	99.3	99.2	99.3	99.2	99.3	99.2	99.3			
55	95.3	95.3	95.3	95.3	95.2	95.3	95.3	95.3	95.3	95.3	95.3	95.3	95.2	95.3	95.3	95.3			
60	91.3	91.3	91.3	91.3	91.3	91.3	91.3	91.3	91.3	91.3	91.3	91.3	91.3	91.3	91.3	91.3			
65	87.3	87.3	87.3	87.3	87.2	87.3	87.3	87.3	87.3	87.3	87.3	87.3	87.2	87.3	87.3	87.3			
70	83.3	83.3	83.3	83.3	83.2	83.3	83.3	83.3	83.3	83.3	83.3	83.3	83.2	83.3	83.3	83.3			
75	79.3	79.3	79.3	79.3	79.3	79.3	79.3	79.3	79.3	79.3	79.3	79.3	79.3	79.3	79.3	79.3			
80	75.3	75.3	75.3	75.3	75.3	75.3	75.3	75.3	75.3	75.3	75.3	75.3	75.3	75.3	75.3	75.3			
85	71.4	71.4	71.4	71.4	71.4	71.4	71.4	71.4	71.4	71.4	71.4	71.4	71.4	71.4	71.4	71.4			
90	67.5	67.6	67.6	67.6	67.6	67.6	67.6	67.6	67.5	67.6	67.6	67.6	67.6	67.6	67.6	67.6			
95	63.8	63.8	63.8	63.9	63.8	63.9	63.8	63.8	63.8	63.8	63.8	63.9	63.8	63.9	63.8	63.8			
100	60.3	60.3	60.3	60.3	60.2	60.3	60.3	60.3	60.3	60.3	60.3	60.3	60.2	60.3	60.3	60.3			
105	56.9	56.9	56.8	56.9	56.8	56.9	56.8	56.9	56.9	56.9	56.8	56.9	56.8	56.9	56.8	56.9			
110	53.6	53.6	53.6	53.5	53.5	53.5	53.6	53.6	53.6	53.6	53.6	53.5	53.5	53.5	53.6	53.6			
115	50.6	50.5	50.5	50.4	50.4	50.4	50.5	50.5	50.6	50.5	50.5	50.4	50.4	50.4	50.5	50.5			
120	47.8	47.7	47.6	47.4	47.5	47.4	47.6	47.7	47.8	47.7	47.6	47.4	47.5	47.4	47.6	47.7			
125	45.0	45.0	44.9	44.7	44.7	44.7	44.9	45.0	45.0	45.0	44.9	44.7	44.7	44.7	44.9	45.0			
130	42.4	42.5	42.3	42.3	42.1	42.3	42.3	42.5	42.4	42.5	42.3	42.3	42.1	42.3	42.3	42.5			
135	39.9	40.3	39.9	39.9	39.8	39.9	39.9	40.3	39.9	40.3	39.9	39.9	39.8	39.9	39.9	40.3			
140	37.3	38.0	37.6	37.8	37.6	37.8	37.6	38.0	37.3	38.0	37.6	37.8	37.6	37.8	37.6	38.0			
145	34.8	35.5	35.3	35.5	35.5	35.5	35.3	35.5	34.8	35.5	35.3	35.5	35.5	35.5	35.3	35.5			
150	32.4	33.0	33.0	33.0	33.2	33.0	33.0	33.0	32.4	33.0	33.0	33.0	33.2	33.0	33.0	33.0			
155	29.1	30.2	30.2	30.3	31.1	30.3	30.2	30.2	29.1	30.2	30.2	30.3	31.1	30.3	30.2	30.2			
160	26.2	27.2	27.3	27.7	28.3	27.7	27.3	27.2	26.2	27.2	27.3	27.7	28.3	27.7	27.3	27.2			
165	23.2	23.7	24.2	24.4	24.6	24.4	24.2	23.7	23.2	23.7	24.2	24.4	24.6	24.4	24.2	23.7			
170	19.5	20.2	20.2	19.8	19.5	19.8	20.2	20.2	19.5	20.2	20.2	19.8	19.5	19.8	20.2	20.2			
175	13.0	12.5	12.3	12.0	11.7	12.0	12.3	12.5	13.0	12.5	12.3	12.0	11.7	12.0	12.3	12.5			
180	0.38	0.40	0.43	0.45	0.45	0.45	0.43	0.40	0.38	0.40	0.43	0.45	0.45	0.45	0.43	0.40			

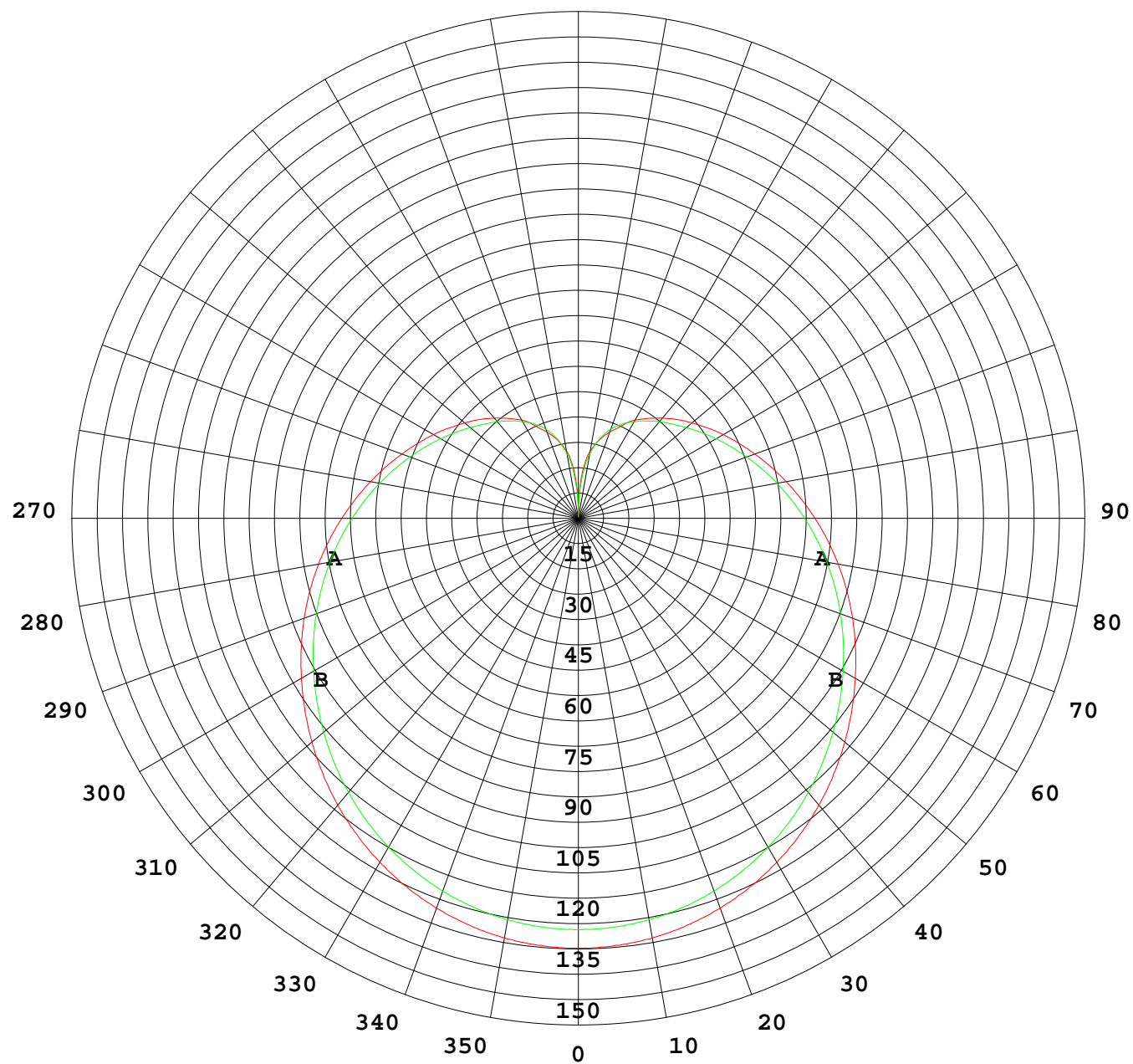
C Range: 0 - 360DEG  
C Interval: 22.5DEG  
Test Speed: HIGH  
Temperature:25.1DEG  
Operators:Wilson  
Test Date:2021-03-13

γ Range: 0 - 180DEG  
γ Interval: 0.5DEG  
Test System:EVERFINE GO-R5000\_V2 SYSTEM V2.0.354  
Humidity:60.5%  
Test Distance:2.521m [K=1.0000]  
Remarks: File No.: WT-F-504-3206-01-A

Checker: Near Gao

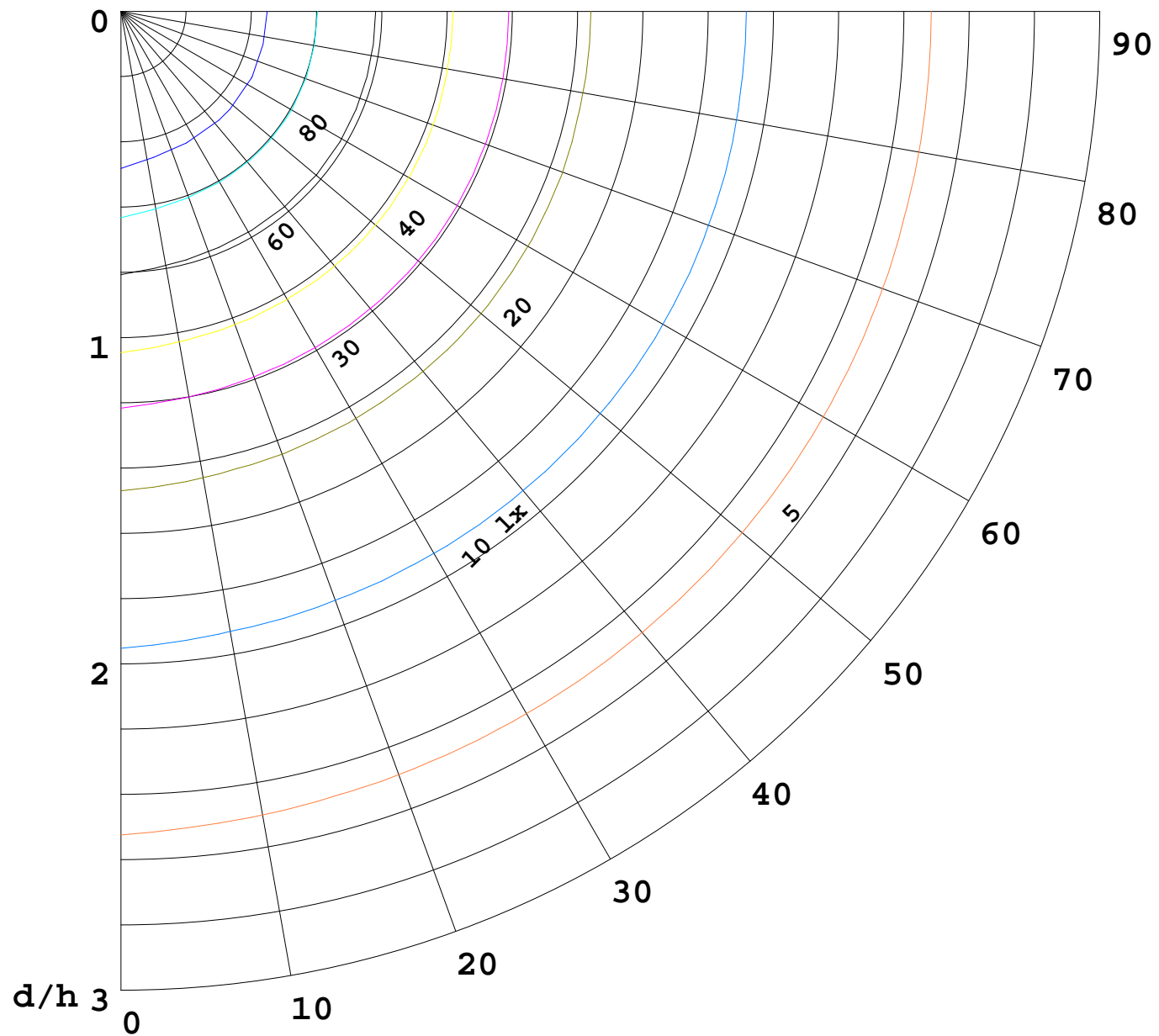
Assessor: Akin Xu

I(cd)



1000 lm

$\kappa = 1$



F = 1000 lm  
 K = 0.7  
 Hcc = 0.8 m  
 Hfc = 0.0 m  
 Eave = 100 lx

	Pcc	Pw	Pfc
————	70	50	30
————	50	30	20

